



Dryden Road, SW19

£659,995

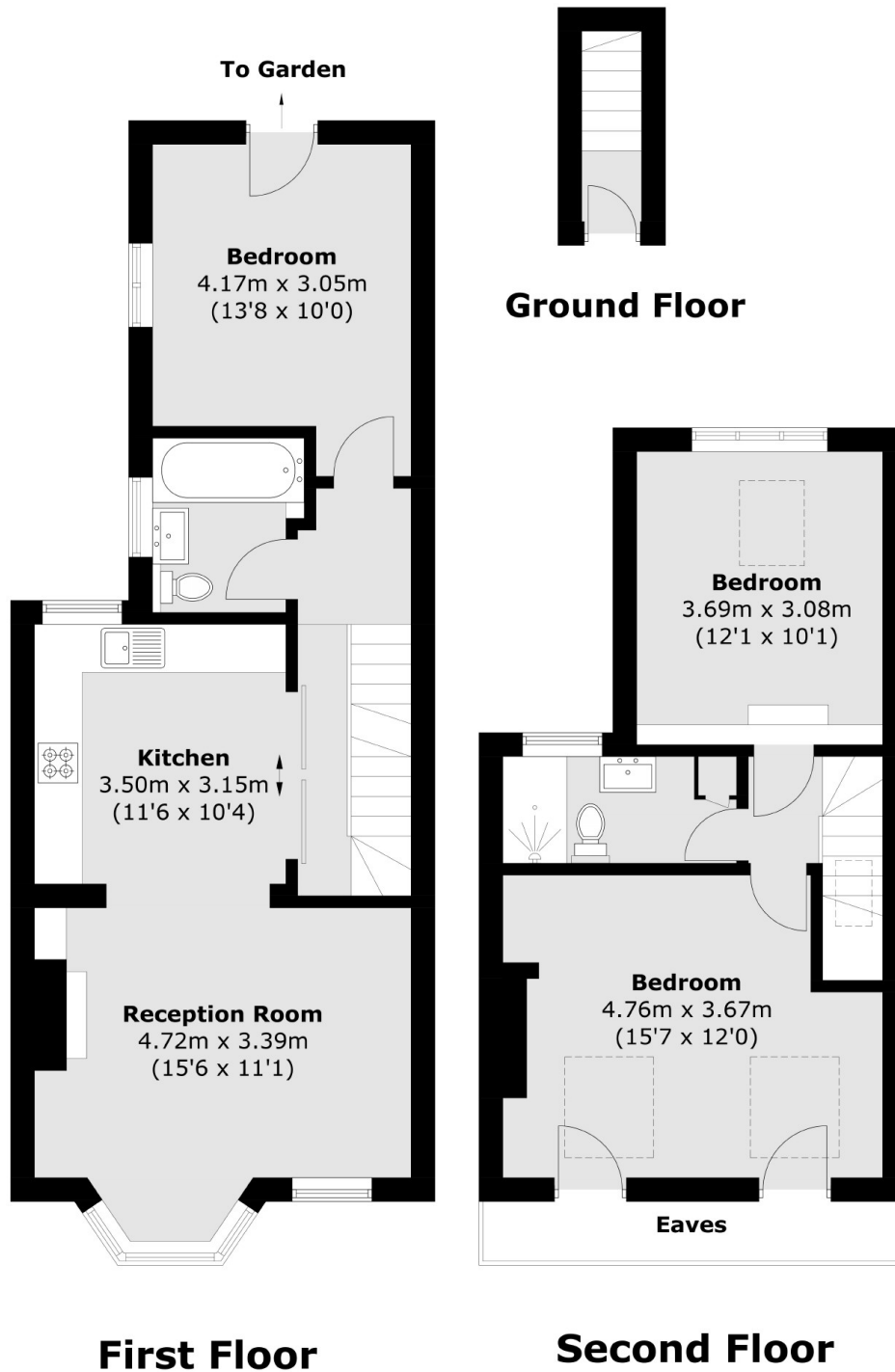
An exceptionally well presented three bedroom, two bathroom split level Victorian conversion. Located on a quiet residential street, the property has a beautiful south facing rear garden, alongside a share of the freehold.

Located within the catchment area for several primary schools and close to Haydons Road (Thameslink), Wimbledon (mainline and district line) and two Northern line stations. An early viewing is recommended

Features

- Three Double Bedrooms
- Two Bathrooms
- South Facing Garden
- Share Of Freehold
- Victorian Conversion
- Split Level

Dryden Road, London, SW19



Total area (approx.): 92.9 sq. m (999.9 sq. ft)
(Excluding Eaves)