



Mill Road, SW19

£600,000

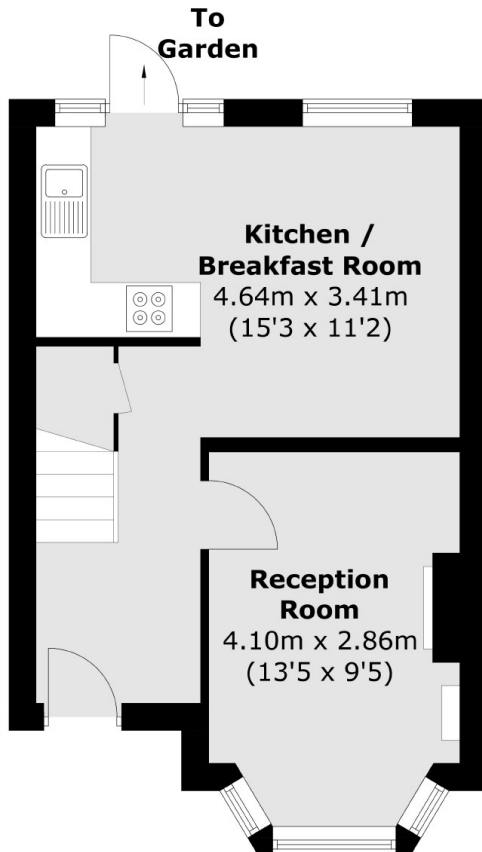
An outstanding Victorian terraced home on a quiet residential street. With two double bedrooms and potential for further expansion, this property is offered to the market with no forward chain.

Mill Road is a popular community-spirited street between Wimbledon and Colliers Wood. It is minutes from M&S, Sainsbury's and Merton Abbey Mills with its wonderful selection of amenities.

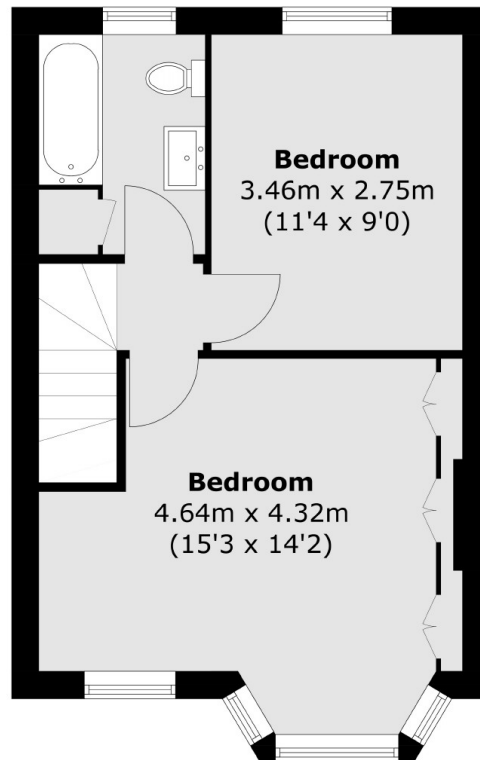
Features

Two Double Bedrooms
Bay-Fronted
Victorian Terrace
Kitchen/Breakfast Room
Potential to Extend STPP
No Forward Chain

Mill Road,
London, SW19



Ground Floor



First Floor

Total area (approx.): 66.2 sq. m (712.5 sq. ft)