



## Dorset Road, SW19

£1,400 Per calendar month

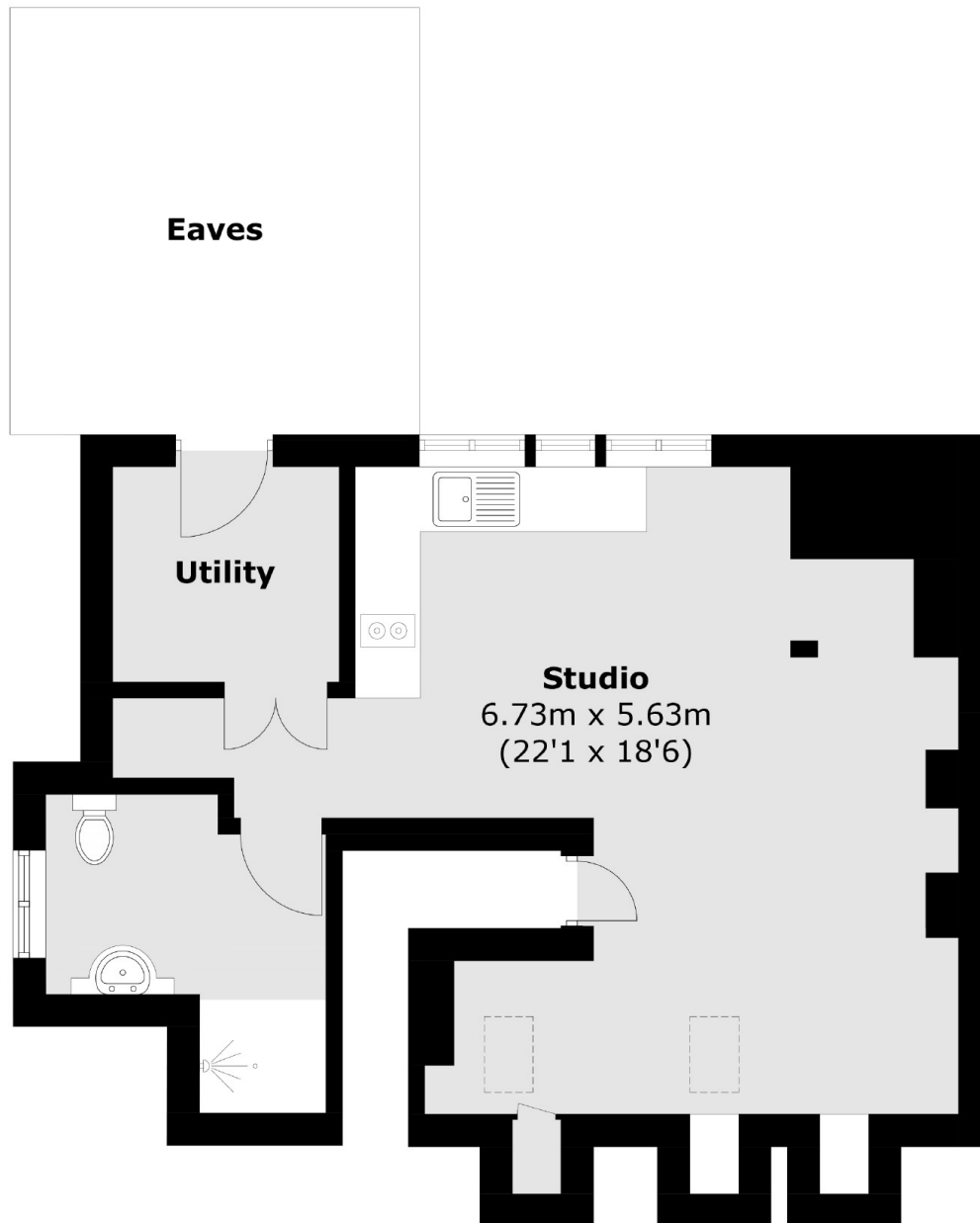
This newly refurbished, top floor studio apartment offers a large, fitted kitchen, a separate bathroom with walk-in shower and storage in the eaves.

Dorset Road is a residential street offering easy access to Morden Park and a short distance from both Morden Road and Merton Park Stations.

### Features

- Studio
- Newly Refurbished
- Top Floor
- Ultra-Modern
- Walk-In Shower
- Permit Parking

# Dorset Road, London, SW19



Total area (approx.): 43.7 sq. m (470.4 sq. ft)  
(Excluding Eaves)