



Griffiths Road, SW19

£575,000

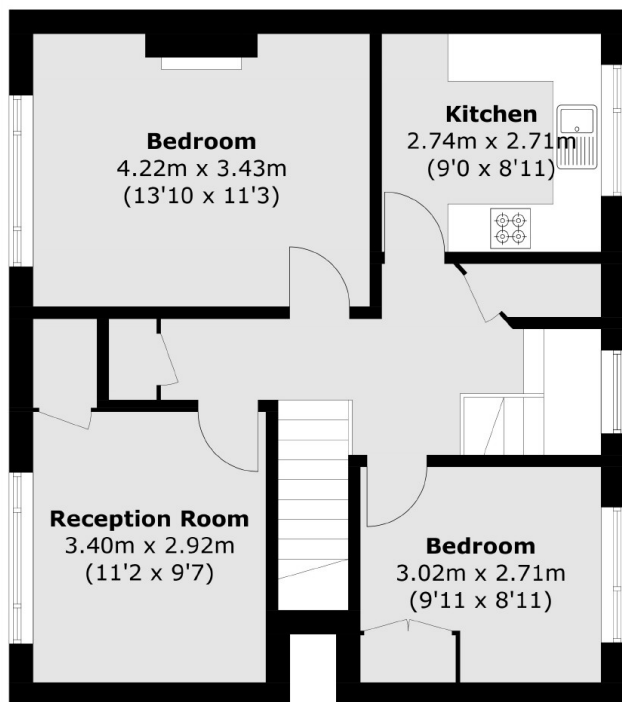
A three bedroom first floor and loft converted maisonette, complete with a private garden and a garage. The property has its own front door and is measured just under 950 square feet.

Located on a quiet street just off The Broadway, equidistant to both the district line and northern line. Shops, bars and delicious restaurants are all on your doorstep, whilst being in the catchment for outstanding schools.

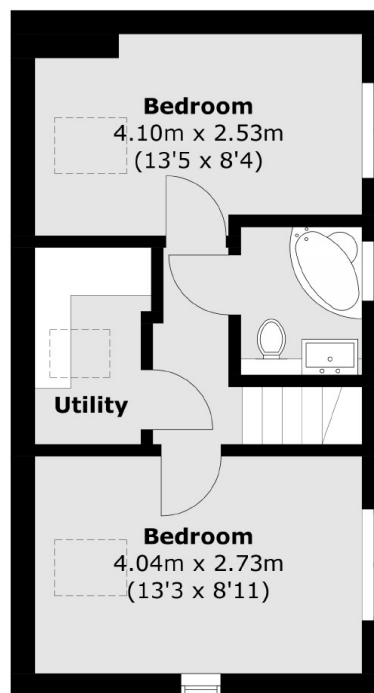
Features

- Three Bedrooms
- Split Level
- Private Rear Garden
- Garage In Block
- Near 950 Square Feet
- Own Front Door

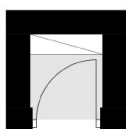
Griffiths Road, London, SW19



First Floor



Second Floor



Ground Floor

Total area (approx.): 90.8 sq. m (977.4 sq. ft)