



## Kingston Road, SW19

£2,395 Per calendar month

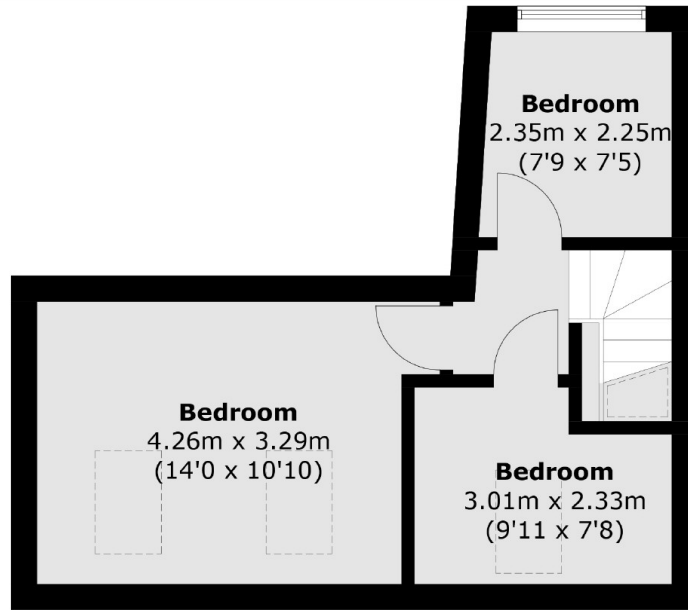
This modern, split level maisonette offers three bedrooms, one bathroom a large living area with space for dining and wooden floors throughout.

The property is well located for South Wimbledon station whilst allowing easy access to Wimbledon Town Centre with its vast array of shops, restaurants and the mainline rail station.

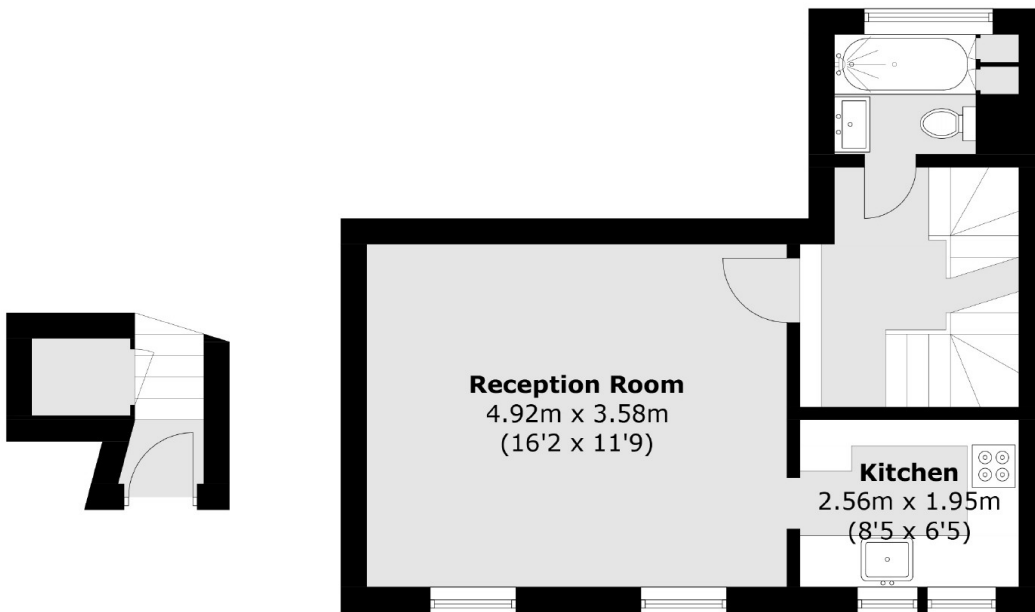
### Features

- Three Bedrooms
- One Bathrooms
- Split Level
- Maisonette
- Wooden Floors
- Modern

# Kingston Road, London, SW19



**First Floor**



**Ground Floor**

**First Floor**

Total area (approx.): 69.8 sq. m (751.3 sq. ft)