



## Leyton Road, SW19

£695,000

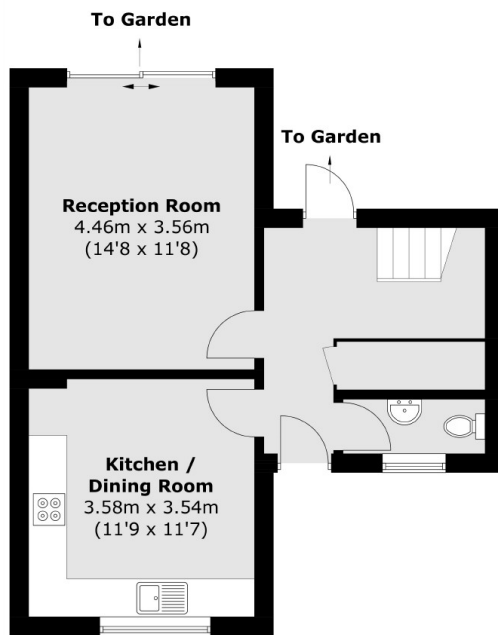
A three bedroom mid terrace house, located on a quiet street, close to the northern line. The house has an off street parking space and is sold with no onward chain.

Leyton Road is a popular and quiet road between Wimbledon and Colliers Wood. Both Wandle Park and Haydons Recreation Grounds are nearby, with Northern Line and Thames Link just a stone's throw away.

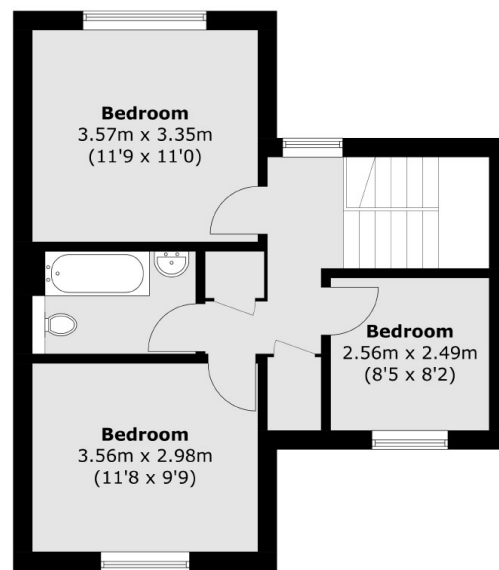
### Features

- Three Bedrooms
- Over Two Floors
- Off Street Parking
- Quiet Street
- Freehold House
- No Onward Chain

# Leyton Road, London, SW19



**Ground Floor**



**First Floor**

Total area (approx.): 88.5 sq. m (952.5 sq. ft)