



Meadow Close, SW20

£3,750 Per calendar month

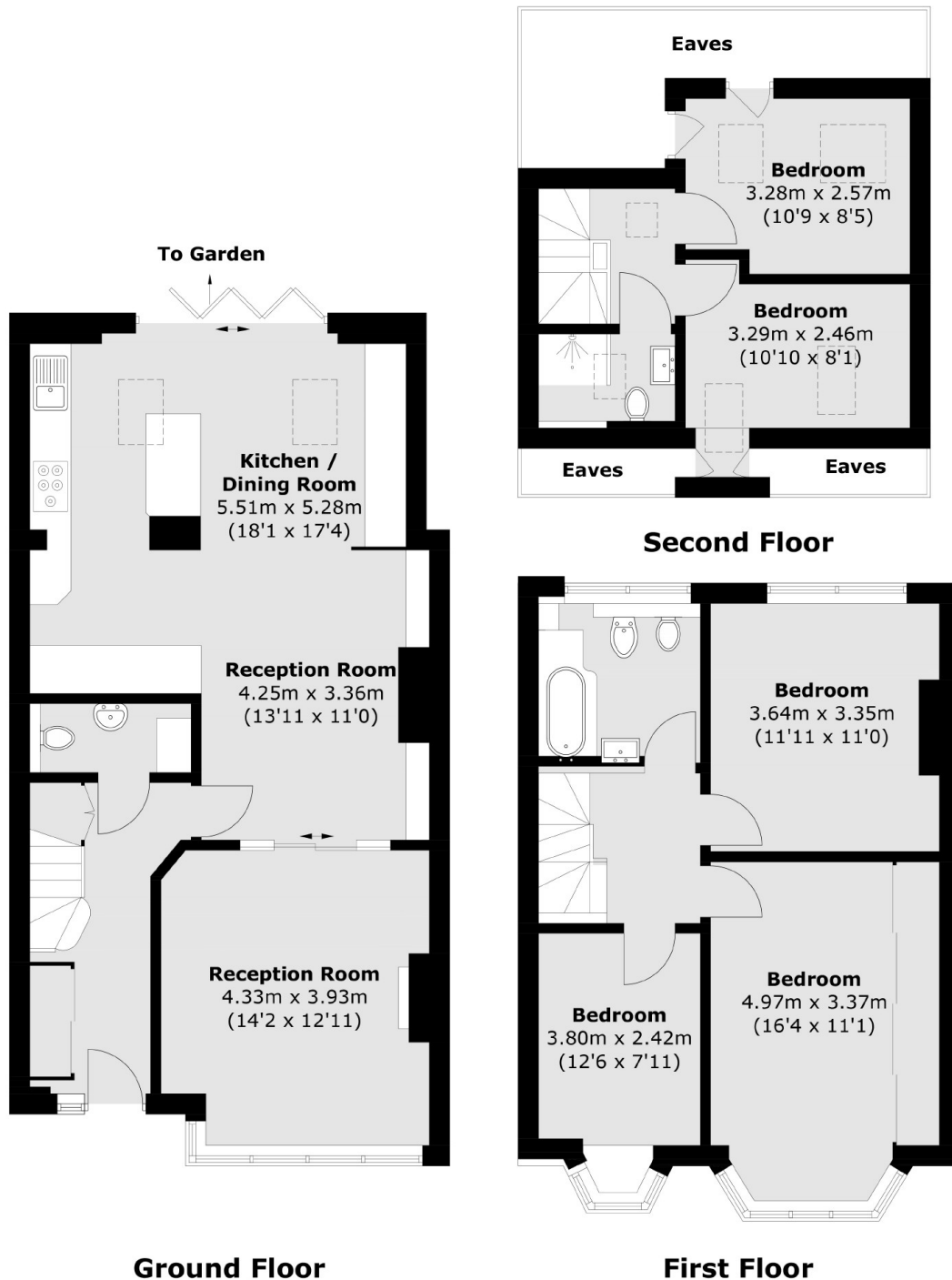
A five bedroom, two bathroom terraced house that has been carefully modernised allowing a large open plan kitchen/dining space that directly opens to the south facing decked rear garden.

Meadow Close is perpendicular to Grand Drive, ideal for families with excellent schools close by and Cannon Hill Common a short walk away.

Features

- Five Bedrooms
- Two Bathrooms
- Additional WC
- Open Plan
- Driveway
- Garden

Meadow Close, London, SW20



Total area (approx.): 140.4 sq. m (1,511.2 sq. ft)
(Excluding Eaves)