



## The Downs, SW20

£2,500 Per calendar month

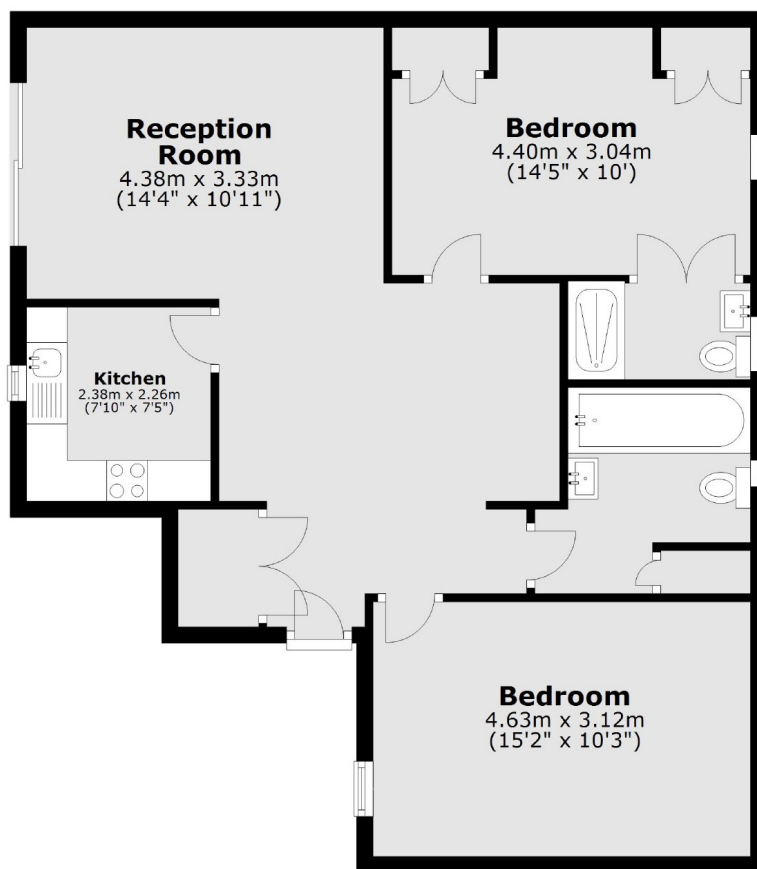
A two bedroom, two bathroom ground floor property with a modern kitchen and large reception room that has wooden floors and opens directly to the private lawn.

The Downs offers close proximity to Wimbledon Village and the Common as well as Wimbledon Centre with the station, a wide range of shopping facilities, restaurants and bars.

### Features

- Two Bedrooms
- Two Bathrooms
- Cottage
- Ground Floor
- Own Front Door
- Parking Available

# The Downs, London, SW20



Total area: approx. 75.5 sq. metres (812.3 sq. feet)