



Cottenham Park Road, SW20

£9,000 Per calendar month

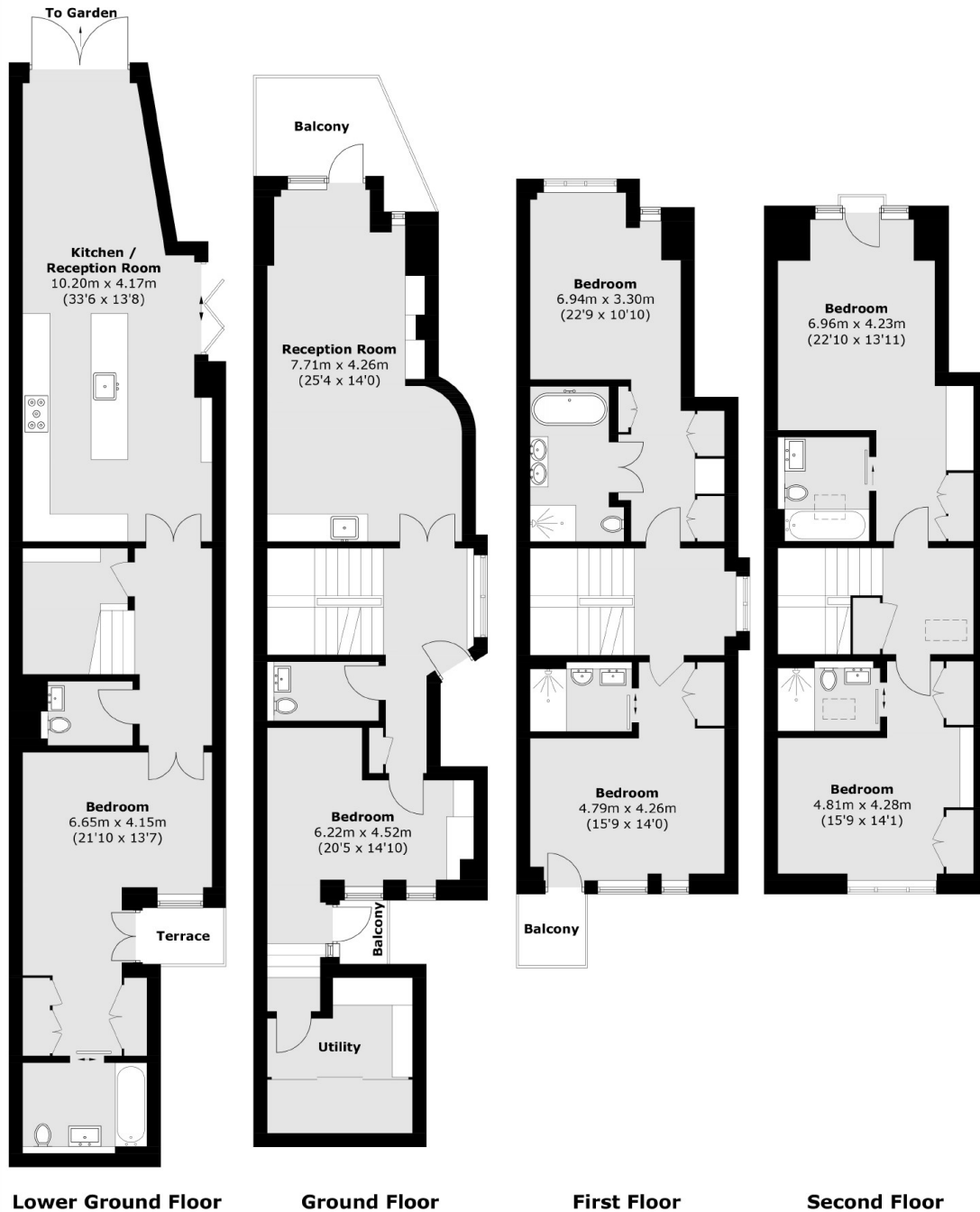
A custom-built semi-detached residence featuring five double bedrooms, five luxurious bathrooms, equipped with the latest technological advancements and high-end appliances.

Located on the edge of Wimbledon Village, within close proximity to Wimbledon Common and exceptional schools. Wimbledon Village has a host of boutique shops, delicious restaurants and a vibrant coffee culture.

Features

- Five Bedrooms
- Three Receptions
- Five Bathrooms
- Garden
- Terrace
- Parking

Cottenham Park Road, London, SW20



Total area (approx.): 275.0 sq. m (2,960.0 sq. ft)
Balcony / Terrace area (approx.): 13.5 sq. m (145.3 sq. ft)