



Kings Road, SW19

£650,000

A three double bedroom, back to brick renovated mansion flat, located opposite the famous 'South Park Gardens'. The property measures near ninety square meters, has a small terrace and communal gardens.

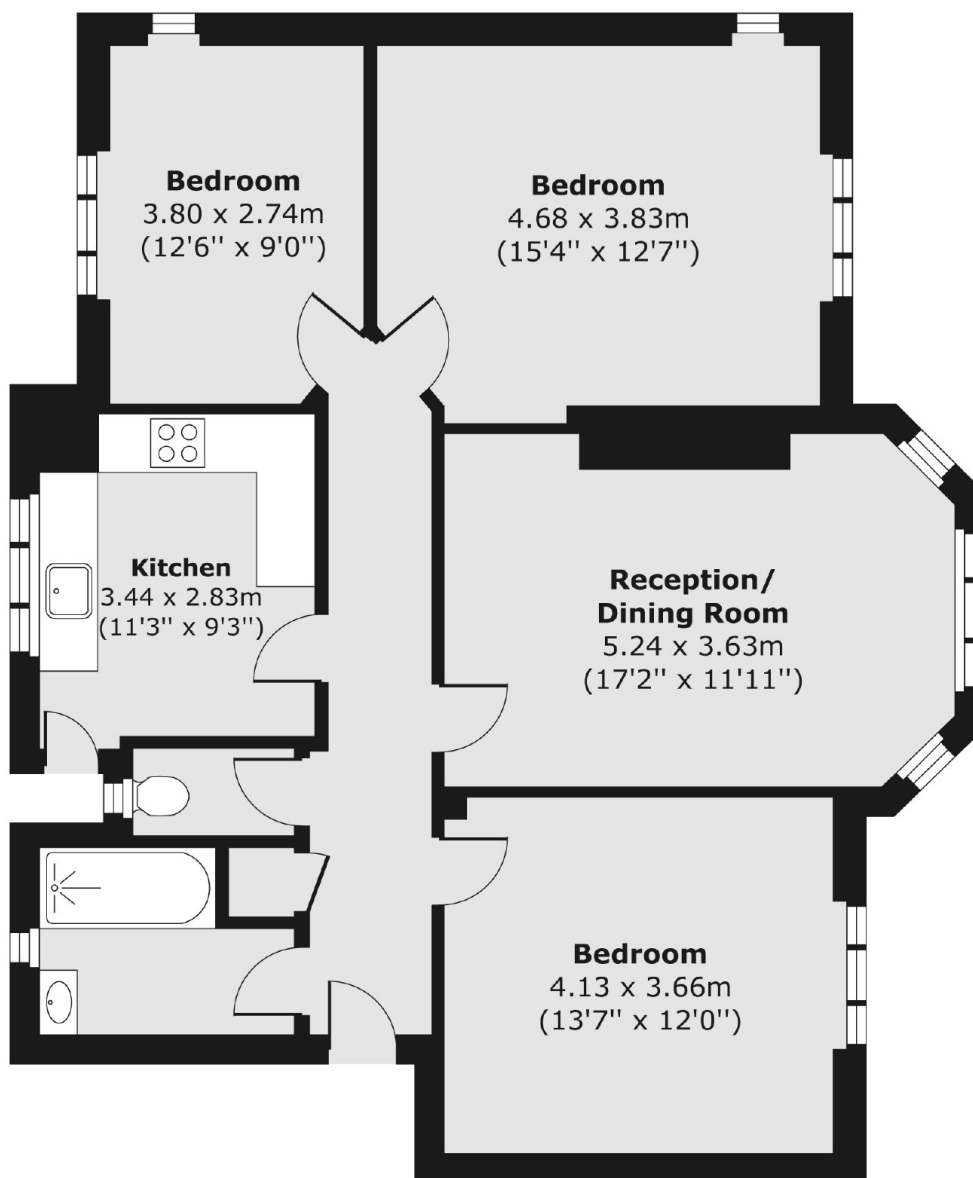
Kings Road is one of the most peaceful in Wimbledon with the apartment sitting at the heart of the South Park Gardens Conservation Area. There is immediate access to Wimbledon Town Centre, with the district line and overground.

Features

- Three Double Bedrooms
- Beautiful Communal Gardens
- South Park Gardens
- Central Location
- Top Floor
- Art Deco Mansion Flat

Kings Road, London, SW19

Third Floor



Total area (approx.) 87.64 sq. m (943 sq. ft)