

Hartfield Road, SW19

£750,000

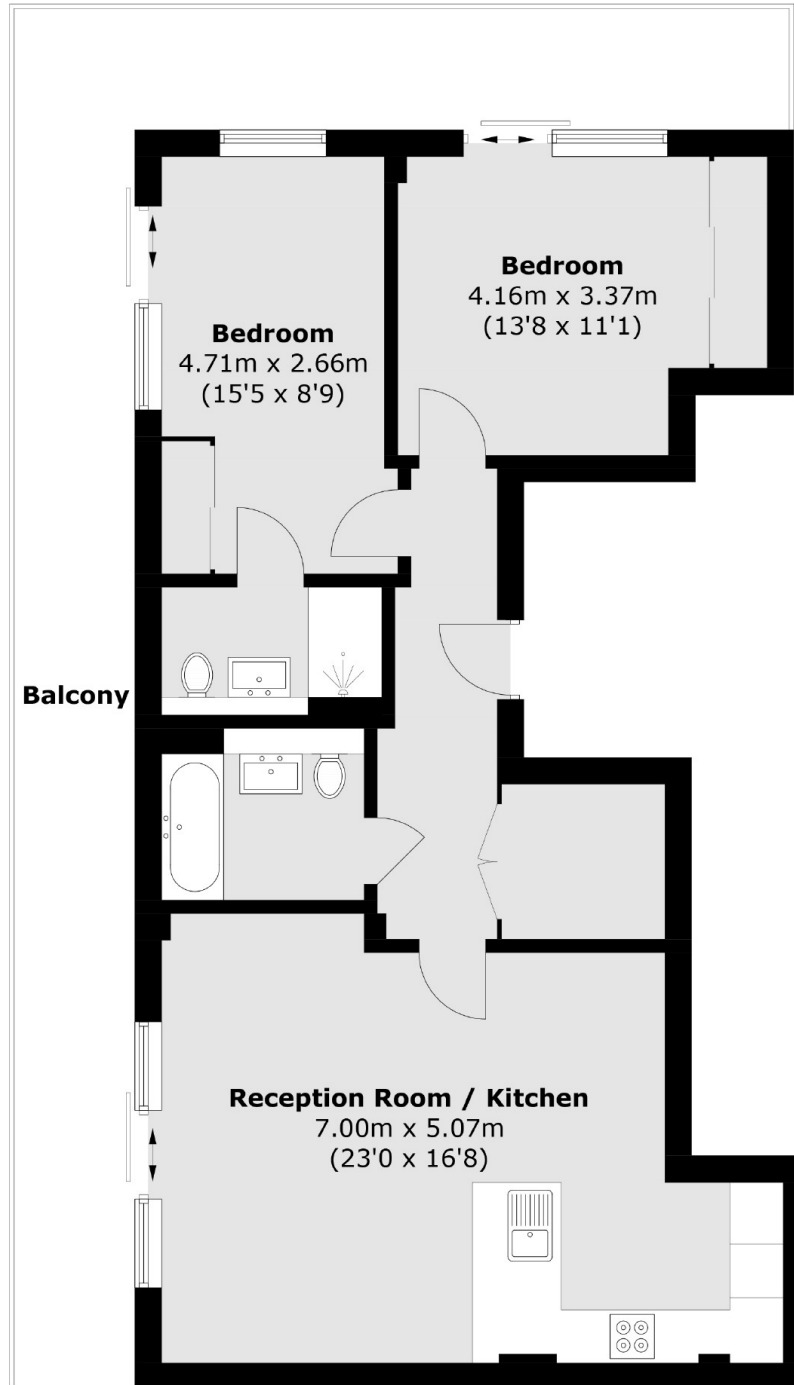
An exceptional two double bedroom, two bathroom, penthouse apartment with its own private roof terrace and exceptionally high ceilings. Located in the very centre of Wimbledon Town, this modern apartment further benefits from a long lease and allocated parking.

Hartfield Road is a popular street located just beside Wimbledon Town Centre. Moments from the District Line, overground station, tram link, bus routes and excellent restaurants, bars and shopping facilities.

Features

- Two Double Bedrooms
- Two Bathrooms
- Private Roof Terrace
- Allocated Parking
- Wimbledon Town Centre
- Communal Gardens

Hartfield Road,
London, SW19



Total area (approx.): 76.2 sq. m (820.2 sq. ft)
Balcony : 31.2 sq. m (335.8 sq. ft)

Dexters

Wimbledon
12 The Broadway
London
SW19 1RF
Sales
020 8545 8580

Energy Rating: C. We aim to make our particulars both accurate and reliable. However they are not guaranteed; nor do they form part of an offer or contract. If you require clarification on any points then please contact us, especially if you're traveling some distance to view. Please note that appliances and heating systems have not been tested and therefore no warranties can be given as to their good working order.

 **RICS** | Regulated
Estate Agent
and Letting Agent

dexters.co.uk