



Worple Road, SW19

£3,995 Per calendar month

A four bedroom, three bathroom Mews property split over three floors in a gated development offering a large reception/dining room and separate kitchen on the ground floor.

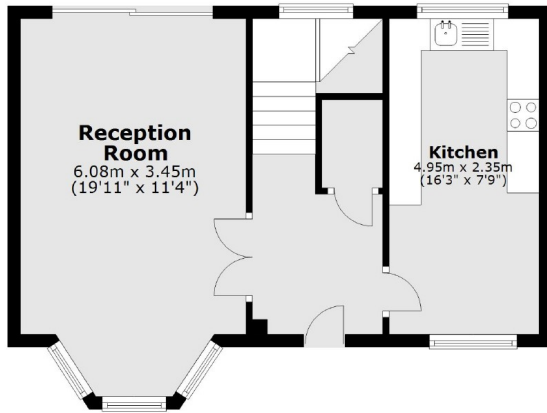
Saffron Mews is a short distance from the amenities and vast transport links of Wimbledon Broadway and a host of fine local boutique shops, restaurants and cafés in Wimbledon Village.

Features

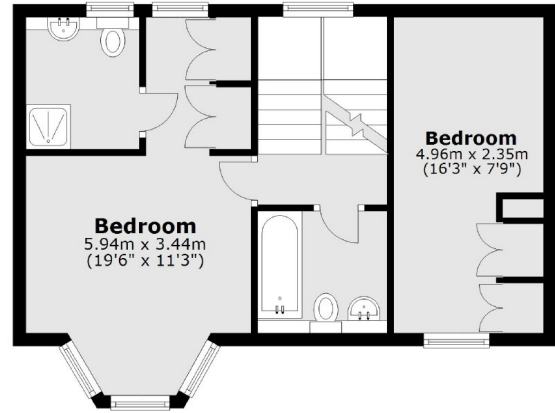
- Four Bedrooms
- Two Bathrooms
- Master En-suite
- Gated Development
- Two Parking Spaces
- Mews House

Worple Road, London, SW19

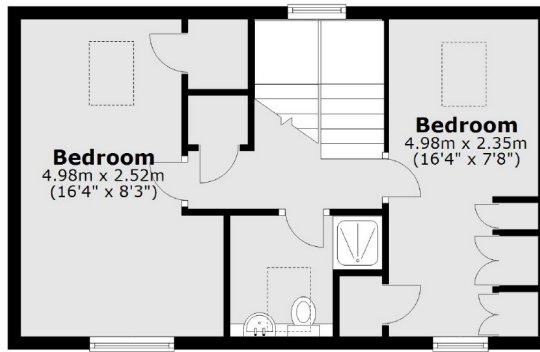
Ground Floor



First Floor



Second Floor



Total area: approx. 124.4 sq. metres (1339.1 sq. feet)