

Elm Grove, SW19

£2,800 Per calendar month

A recently built two double bedroom Townhouse, with a large open plan living room/kitchen, with integrated appliances, including dishwasher and wine chiller.

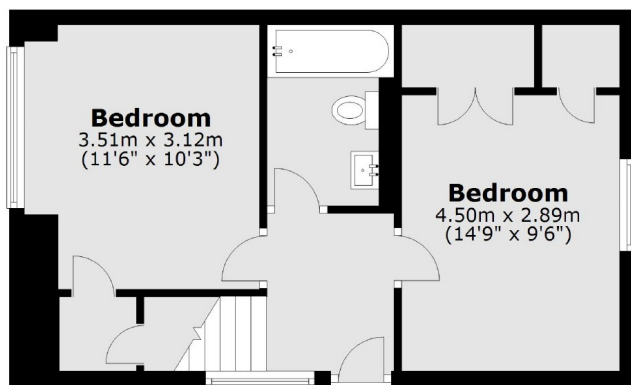
Cree Studios are located off Elm Grove. Elm Grove is cul-de-sac just over half a mile from Wimbledon Broadway and station allowing easy access to the town centre's restaurants and shops.

Features

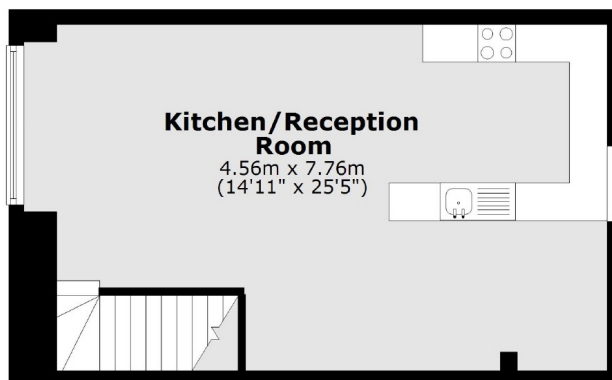
- Two Bedroom House
- Wooden Flooring
- Open Plan Kitchen
- Plenty of Storage
- New Build
- Off Street Parking

Elm Grove, London, SW19

Ground Floor



First Floor



Total area: approx. 71.7 sq. metres (771.8 sq. feet)