



Arterberry Road, SW20

£3,000 Per calendar month

A unique opportunity to rent this two bedroomed detached house arranged over two floors, the house offers open plan living on the ground floor with a wooden burner and two marble bathrooms, as well as, a paved garden.

Arterberry Road is perpendicular to Worple Road and a short walk from Raynes Park and the Coombe Lane parade of shops and eateries and of course, the Rail station

Features

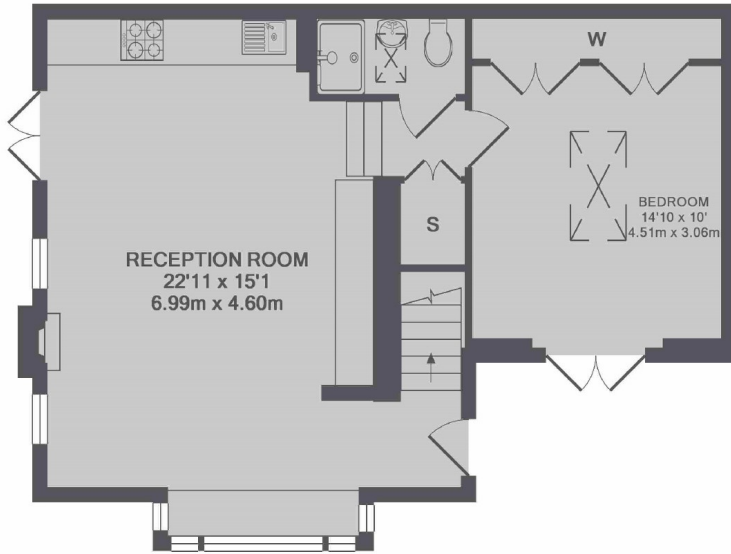
- Two Bedrooms
- Two Bathrooms
- Wooden Floors
- Wood Burner
- Detached House
- Paved Garden



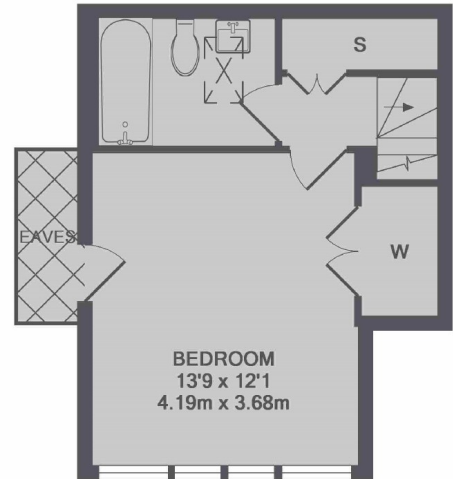
Arterberry Road, SW20



Arterberry Road, London, SW20



GROUND FLOOR



1ST FLOOR

TOTAL APPROX. FLOOR AREA 855 SQ.FT. (79.4 SQ.M.)