



Pelham Road, SW19

£575,000

A beautifully presented one/ two bedroom ground floor Victorian conversion flat with a separate study and direct access to a long landscaped private rear garden, in the region of sixty feet.

Located on a quiet street just off Wimbledon Broadway, in the highly sought after Ministers area of Wimbledon. The district and northern line are nearby, with shops, bars, restaurants and the theatre on your doorstep. Pelham and St. Marys Primary Schools are very close.

Features

- Primary Schools Nearby
- Semi Detached Building
- Garden Office
- Cellar
- Scope To Extend
- Share Of Freehold



Pelham Road, SW19

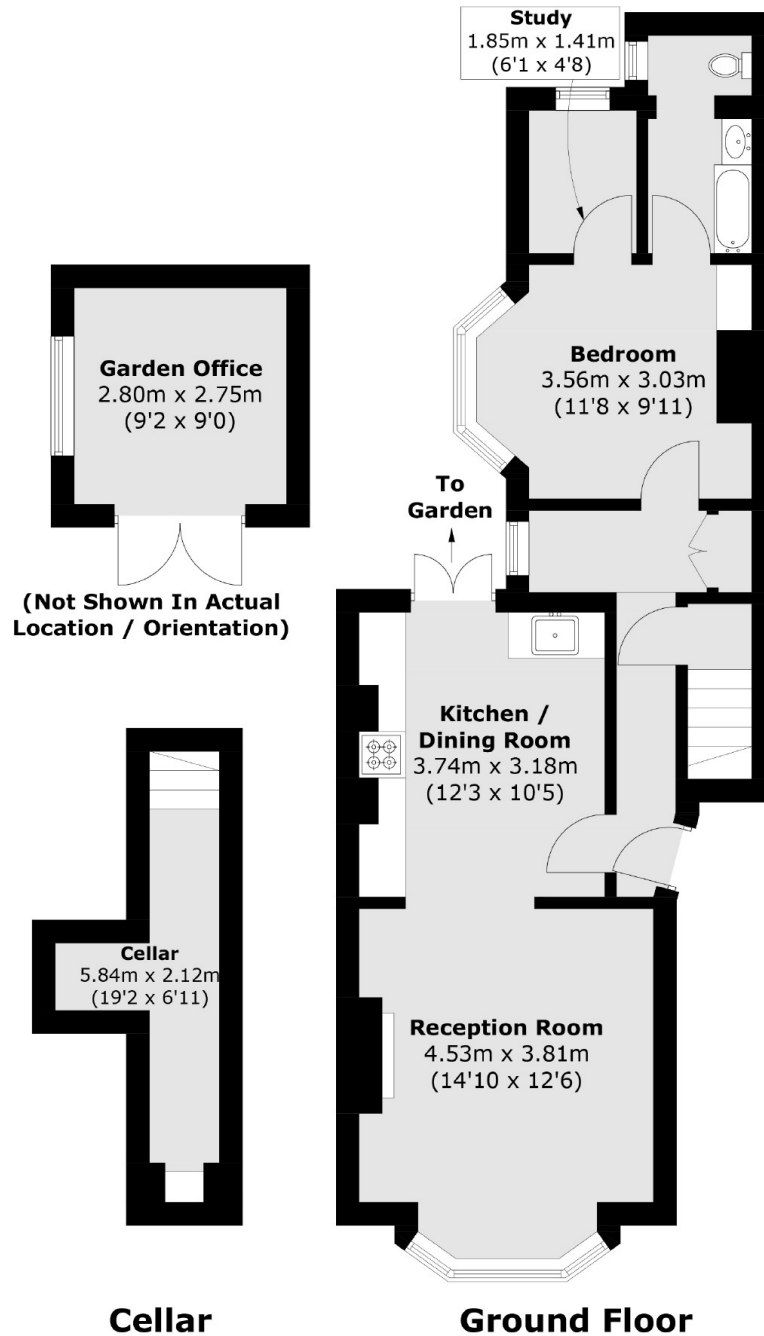
There is an abundance of period features throughout, with an open plan kitchen/dining room and French doors that open to the sizable rear garden, with a mixture of luxury patio, lawn and planting.

The front reception room has a beautiful period fireplace, with original sash windows and a cellar just off the hallway, providing ample storage and offering ceiling heights in the region of 1.6 meters.

The property has potential to extend into the garden and has currently been granted planning permission to create a further double bedroom.



Pelham Road,
London, SW19



Total area (approx.): 61.4 sq. m (660.9 sq. ft)
(Including Cellar)

Cellar: 6.3 sq. m (67.8 sq. ft)

Garden Office: 7.9 sq. m (85.0 sq. ft)

Dexters

Wimbledon
12 The Broadway
London
SW19 1RF
Sales
020 8545 8580

Energy Rating: C. We aim to make our particulars both accurate and reliable. However they are not guaranteed; nor do they form part of an offer or contract. If you require clarification on any points then please contact us, especially if you're traveling some distance to view. Please note that appliances and heating systems have not been tested and therefore no warranties can be given as to their good working order.

 **RICS** | Regulated
Estate Agent
and Letting Agent

dexters.co.uk