



Durnsford Road, SW19

£350,000

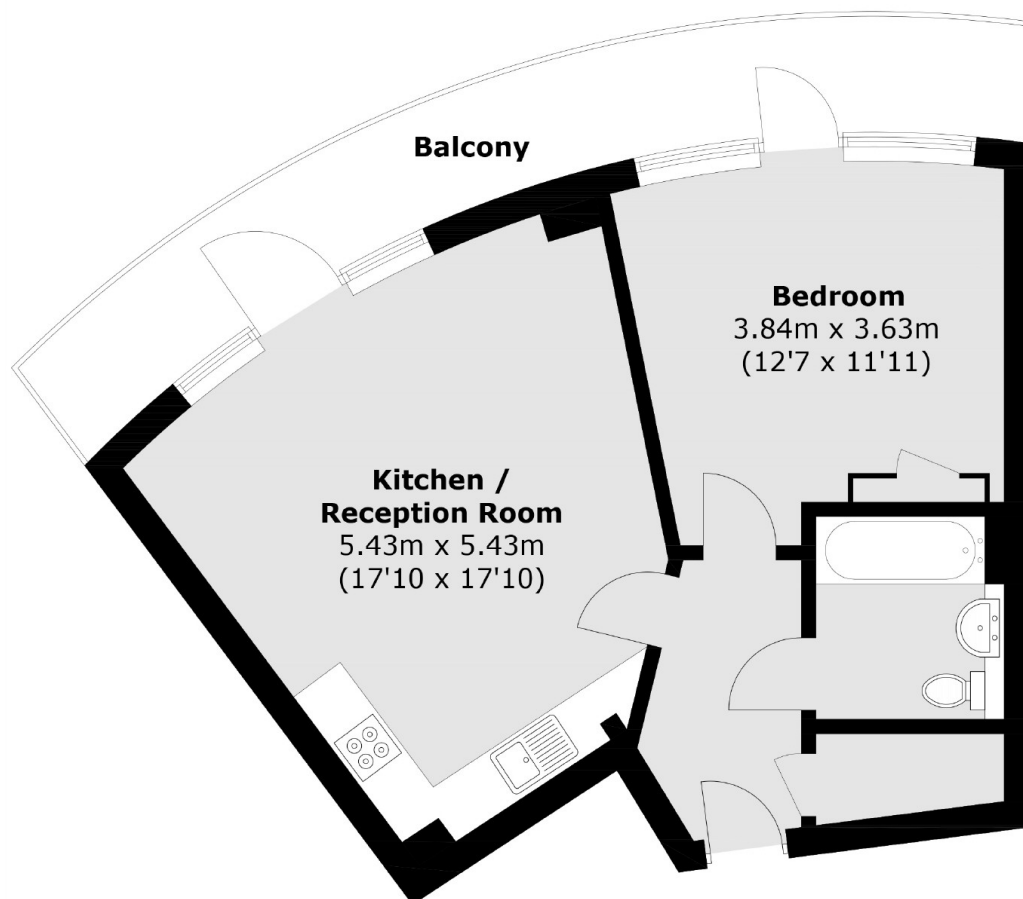
A sixth floor, one double bedroom apartment with off street parking. The apartment has been refurbished to a superb standard, benefits from some of the best views in the development and a large wrap-around balcony.

Ideally located within close proximity of Wimbledon Park and an outstanding primary school. There's easy access to both Earlsfield and Southfields where there are excellent transport links and a huge variety of shops, bars and restaurants.

Features

- Large Wraparound Balcony
- Far Reaching Views
- Allocated Off Street Parking
- Fully Renovated
- Sixth Floor
- One Double Bedroom

Durnsford Road, London, SW19



Total area (approx.): 49.4 sq. m (531.7 sq. ft)
Balcony area (approx.): 13.2 sq. m (142 sq. ft)