



## Poulter Park, SM4

£375,000

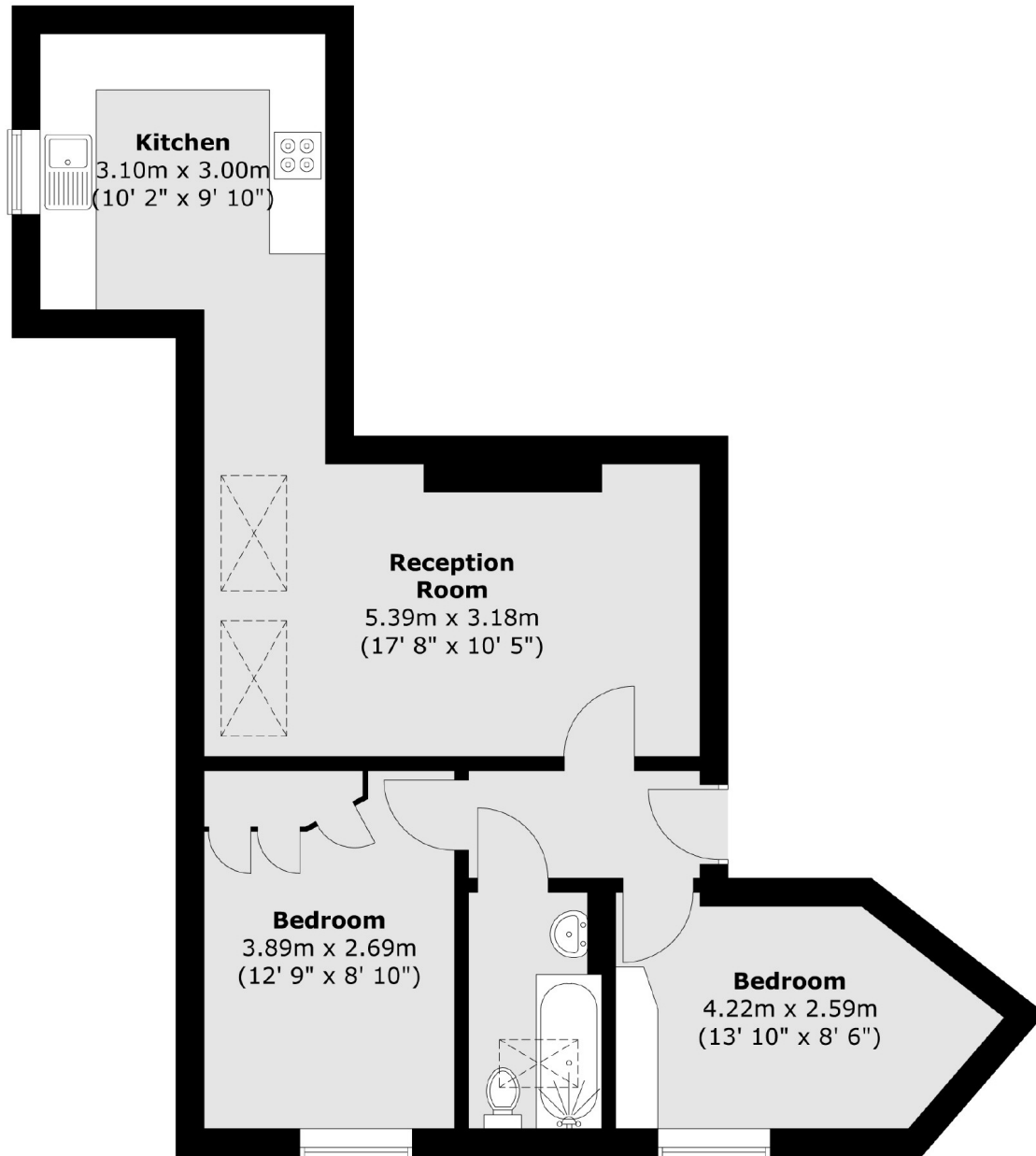
A bright and spacious two double bedroom apartment with excellent parkland views. Set within a gated development with the benefit of off street parking and expansive communal gardens.

Located in Poulter Park, Bishopsford House occupies a large plot beside the River Wandle surrounded by the beauty of the Watermeads Nature Reserve and convenient bus routes at the base of the road.

### Features

Two Double Bedrooms  
Set In a Nature Reserve  
Allocated Parking  
Long Lease  
Wonderful Walks Nearby  
Beautifully Presented

# Poulter Park, Morden, SM4



Total area (approx.) : 57 sq. m (613 sq. ft)