



Sydney Road, SW20

£690,000

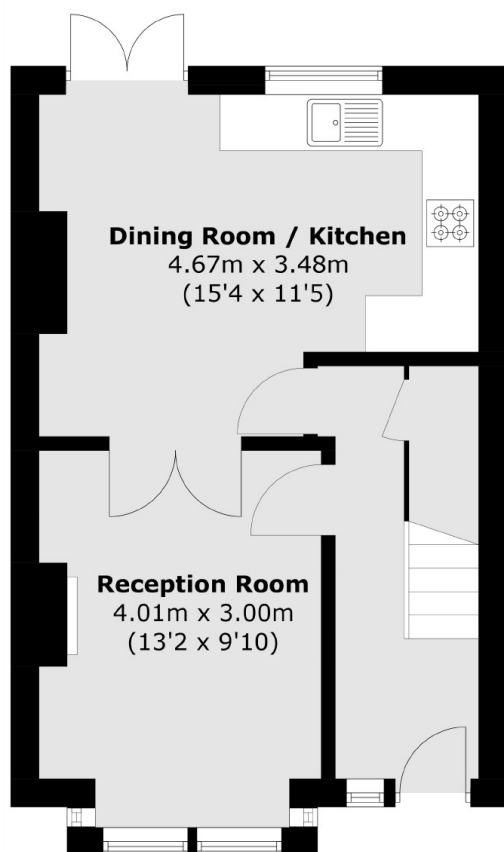
A well presented two double bedroom Victorian family home, with huge rear and loft extension potential. The property is located in the desirable 'Apostles' in Raynes Park and is offered with no forward chain.

Sydney Road is just a short walk from Raynes Park Station with its quick connections in to London. A multitude of shops, restaurants, pubs and a Waitrose also just a short walk away.

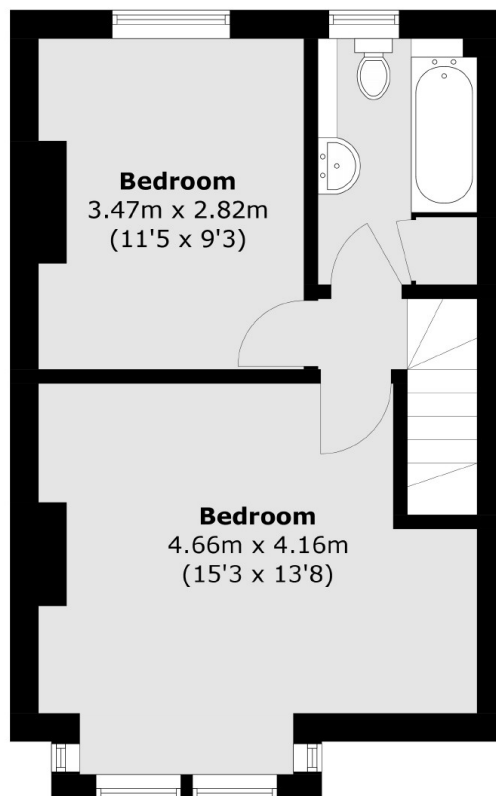
Features

Victorian Apostles House
Two Double Bedrooms
West Facing Garden
Potential to Extend
Great Transport Links
Cul De Sac Road

Sydney Road, London, SW20



Ground Floor



First Floor

Total area (approx.): 70.3 sq. m (756.7 sq. ft)