



Sydney Road, SW20

£750,000

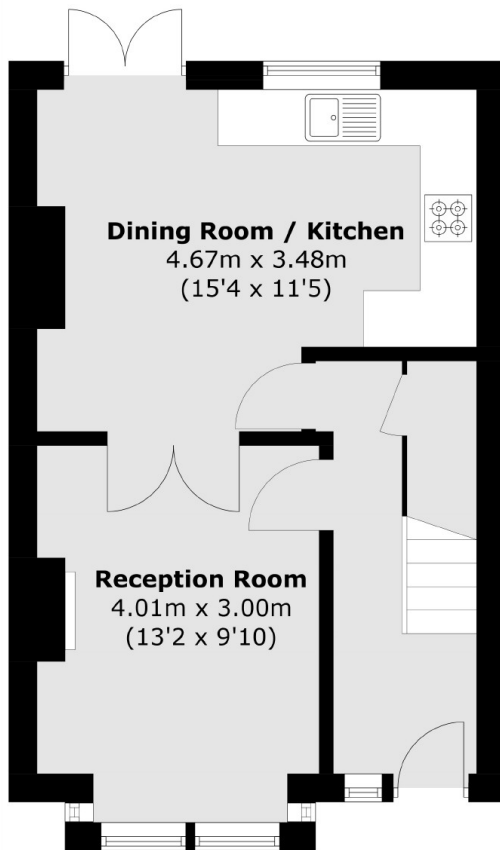
A well presented two double bedroom Victorian family home, with huge rear and loft extension potential. The property is located in the desirable 'Apostles' in Raynes Park and is offered with no forward chain.

Sydney Road is just a short walk from Raynes Park Station with its quick connections in to London. A multitude of shops, restaurants, pubs and a Waitrose also just a short walk away.

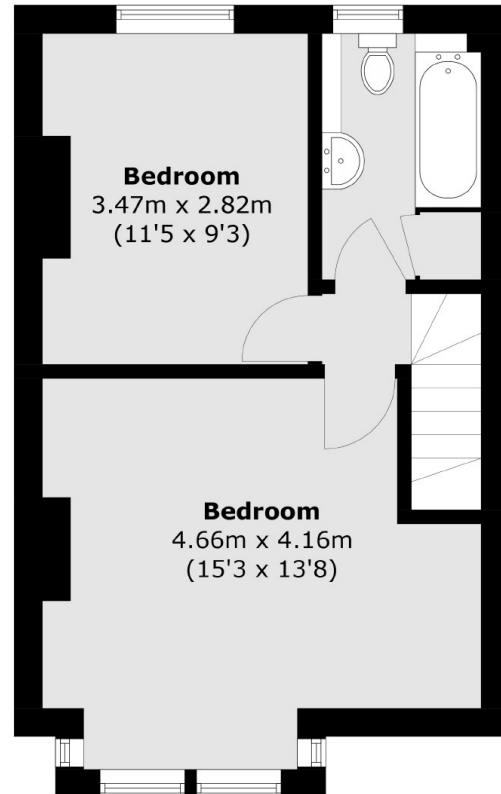
Features

- Victorian Apostles House
- Two Double Bedrooms
- West Facing Garden
- Potential to Extend
- Great Transport Links
- Cul De Sac Road

Sydney Road, London, SW20



Ground Floor



First Floor

Total area (approx.): 70.3 sq. m (756.7 sq. ft)