



Worple Road, SW20

£369,950

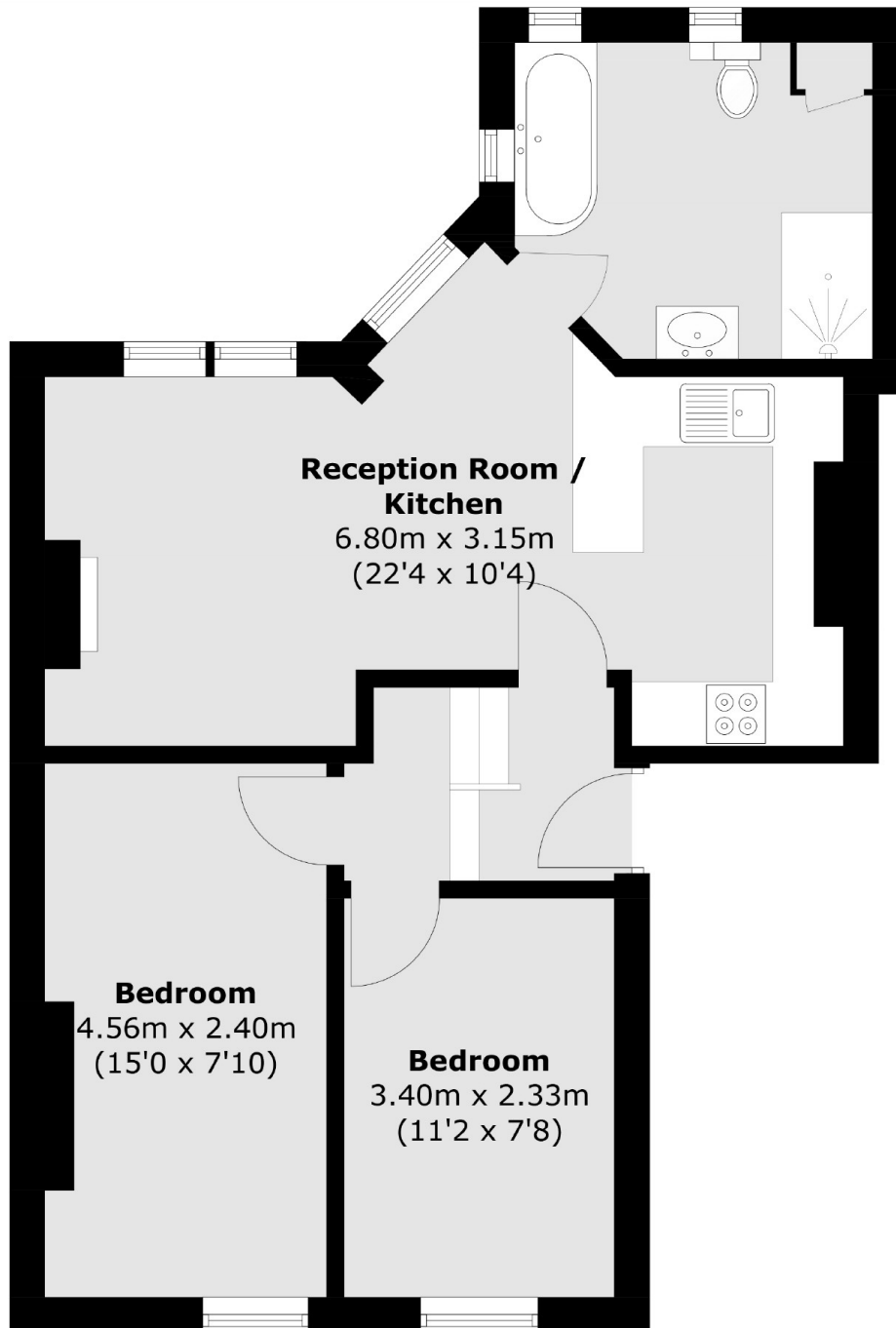
A first floor Victorian conversion flat, incredibly well proportioned and measured at over 580 square feet. The property has a small set of stairs to give the feeling of a split level, there's an extended lease and no onward chain.

Incredibly close to Raynes Park Station, Waitrose and a number of delicious coffee shops, brunch spots and restaurants. Wimbledon Village is a short walk away and you're in the catchment for Hollymount School, rated outstanding.

Features

- Victorian Conversion
- Over 580 Square Feet
- No Onward Chain
- Central Raynes Park
- Two Double Bedrooms
- Extended Lease

Worple Road, London, SW20



Total area (approx.): 54.0 sq. m (581.2 sq. ft)