



## Woodside, SW19

£550,000

A truly unique apartment measuring circa 900 SQFT, set within a red brick period property. The apartment has an abundance of space throughout, set over an attractive split-level arrangement. Sold with no onward chain.

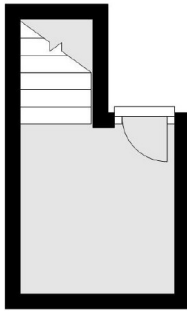
The apartment lies just moments from the shops and restaurants of Wimbledon Village as well as the extensive open spaces of Wimbledon Common. It is also conveniently located for access to both Wimbledon main line station and the District line as well as the amenities of Wimbledon Town.

### Features

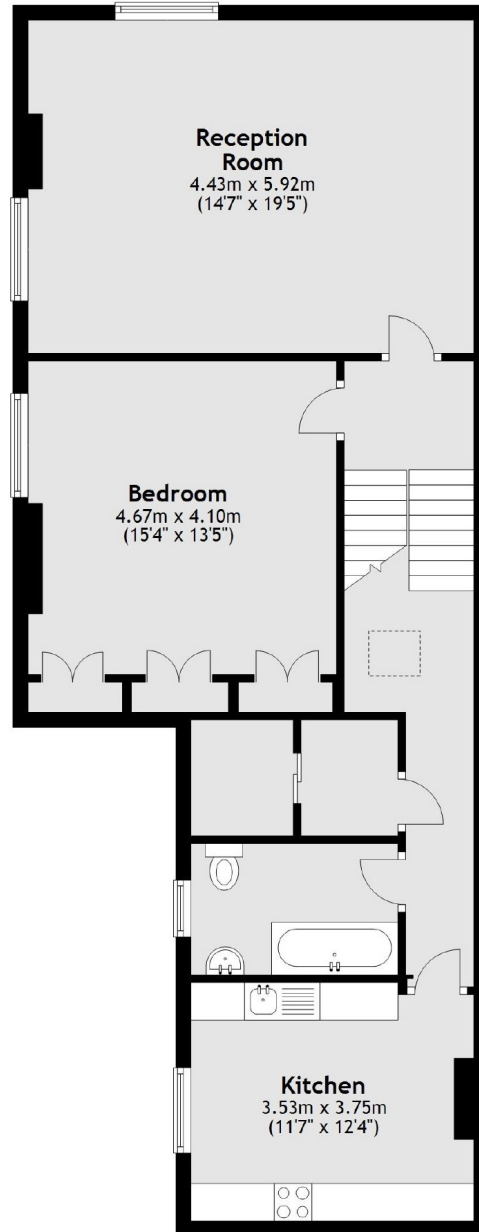
- One Bedroom
- Close to 900 SQFT
- Sought After Location
- Close To The Village
- No Onward Chain
- Share Of Freehold

# Woodside, London, SW19

First Floor



Second Floor



Main area: Approx. 83.3 sq. metres (896.2 sq. feet)