



## Worple Road, SW19

£695,000

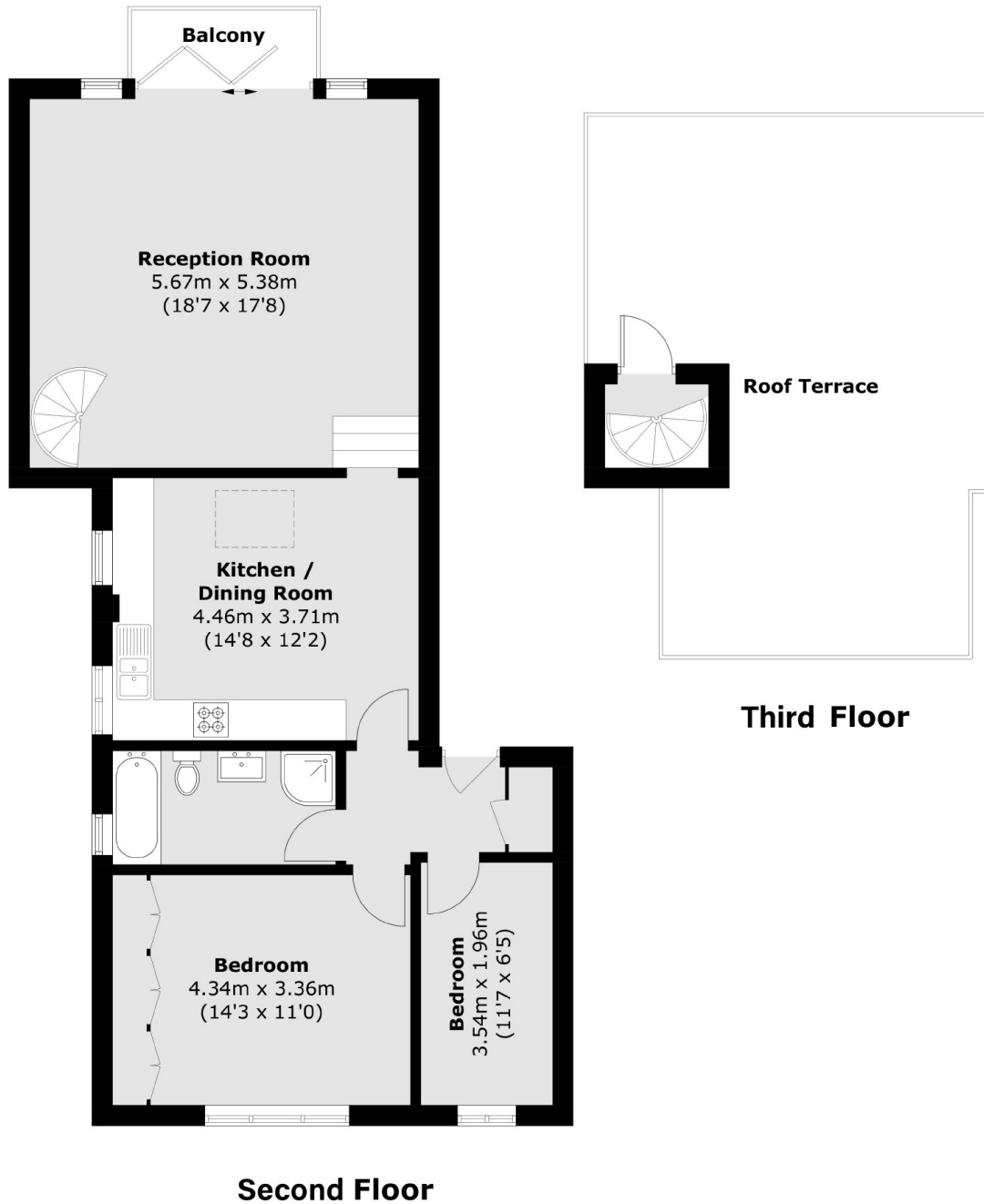
A truly unique apartment measuring over nine hundred square feet, set within a double fronted Victorian property. There is an abundance of light and space throughout, with both south facing balcony and private roof terrace.

Located near the centre of Wimbledon with its superb rail and tube links. Within walking distance of the open spaces of Wimbledon Common and the shops, bars and restaurants of the Village

### Features

- Two Bedrooms
- Private Balcony
- Communal Gardens
- Allocated Parking Space
- Expansive Roof Terrace
- Victorian Conversion

Worple Road,  
London, SW19



Total area (approx.): 84.1 sq. m (905.2 sq. ft)  
Balcony / Roof Terrace area : 41.5 sq. m (446.7 sq. ft)