



Holly Tree Close, SW19

£2,000 Per calendar month

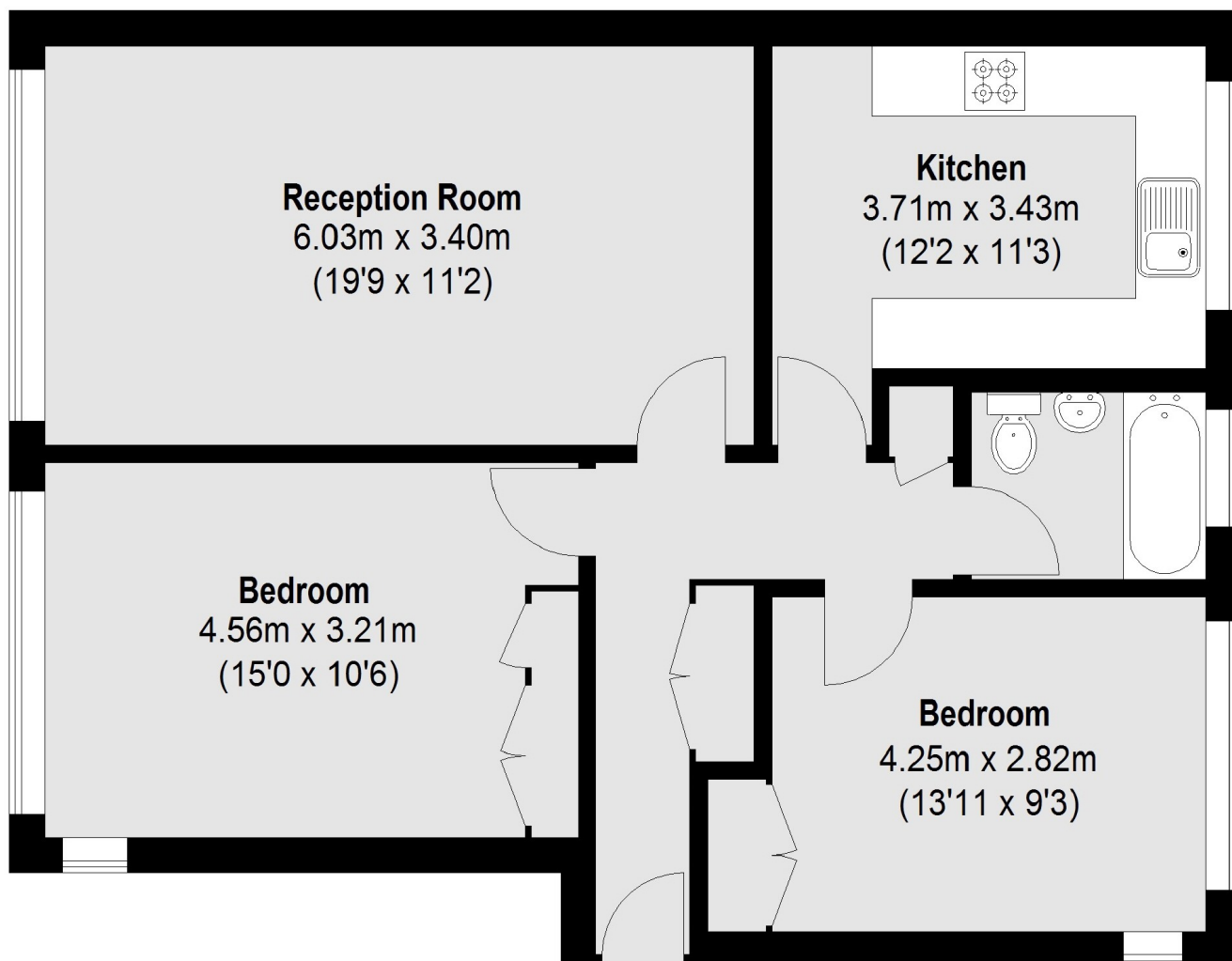
A fifth floor, two double bedroom, one bathroom apartment with a separate living room with space for dining and a large kitchen with breakfast bar as well as parking.

Holly Tree Close off Inner Park Road is close to Wimbledon Common giving easy access to Wimbledon and Putney both with National Rail and District Line stations as well as the A3 for those who drive.

Features

- Two Double Bedrooms
- Large Kitchen
- Built In Storage
- Off-street Parking
- Lift Access
- Fifth Floor

Holly Tree Close, London, SW19



Fifth Floor

Total area (approx.): 71.15 sq. m (766 Sq. ft)