



## Orchard Close, SW20

£1,050,000

An end of terrace original Blay house, extended to the rear, the loft and presented in excellent condition throughout, complete with four bedrooms, two bathrooms and a utility room.

Located a short distance from Raynes Park with many local shops including Waitrose and well regarded restaurants in addition to the overground station with services into London. The property is also has excellent schooling in both state and private sectors nearby.

### Features

- Four Bedrooms
- Two Bathrooms
- End of Terrace
- Utility Room
- Off Street Parking
- Exceptional Finish



## Orchard Close, SW20

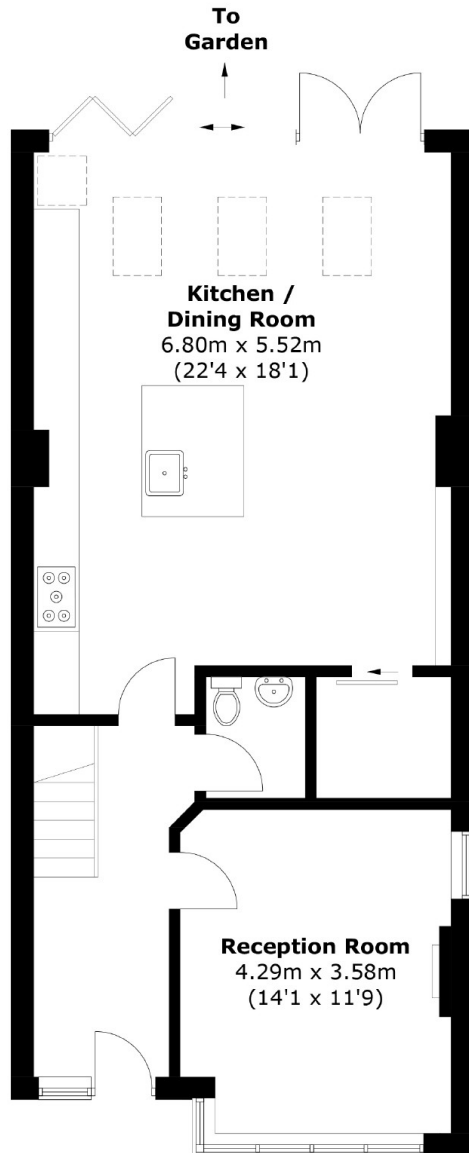
The ground floor has a dual aspect bay-fronted through reception room with working fire place, separate w/c, a utility room. The entrance hall leads through to an exceptionally well presented kitchen/dining room with bi-folding doors leading to the garden.

The first floor has three bedrooms and a family bathroom with stairs leading to the second floor. The loft has been converted to provide a generous principal bedroom and separate shower room.

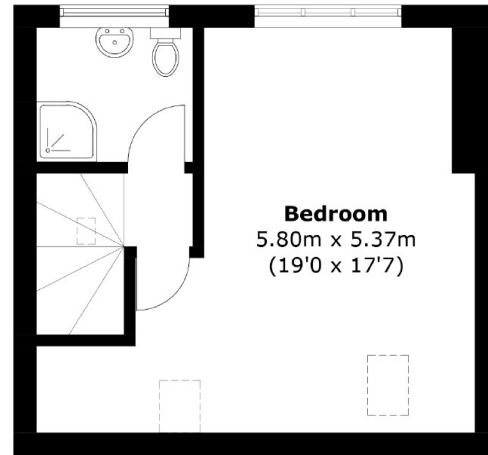
Presented in beautiful condition throughout, this home offers a spacious and versatile layout, tucked away at the end of a desirable cul de sac, which is both private, quiet and peaceful.



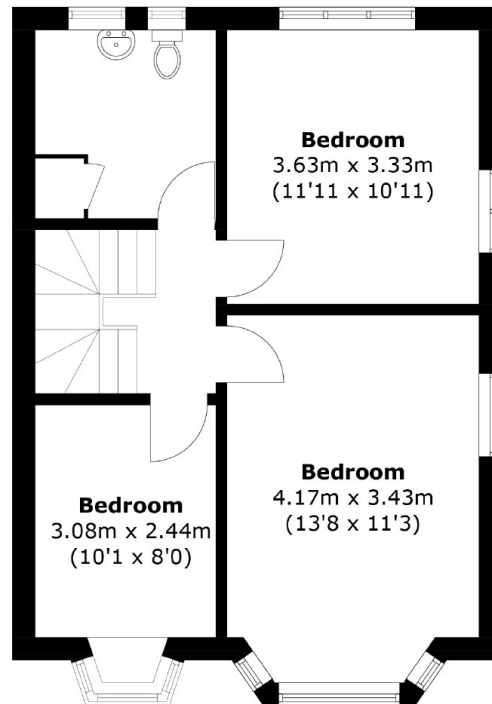
# Orchard Close, London, SW20



**Ground Floor**



**Second Floor**



**First Floor**

Total area (approx.): 150.9 sq. m (1624.2 sq. ft)