



## Victory Road, SW19

£650,000

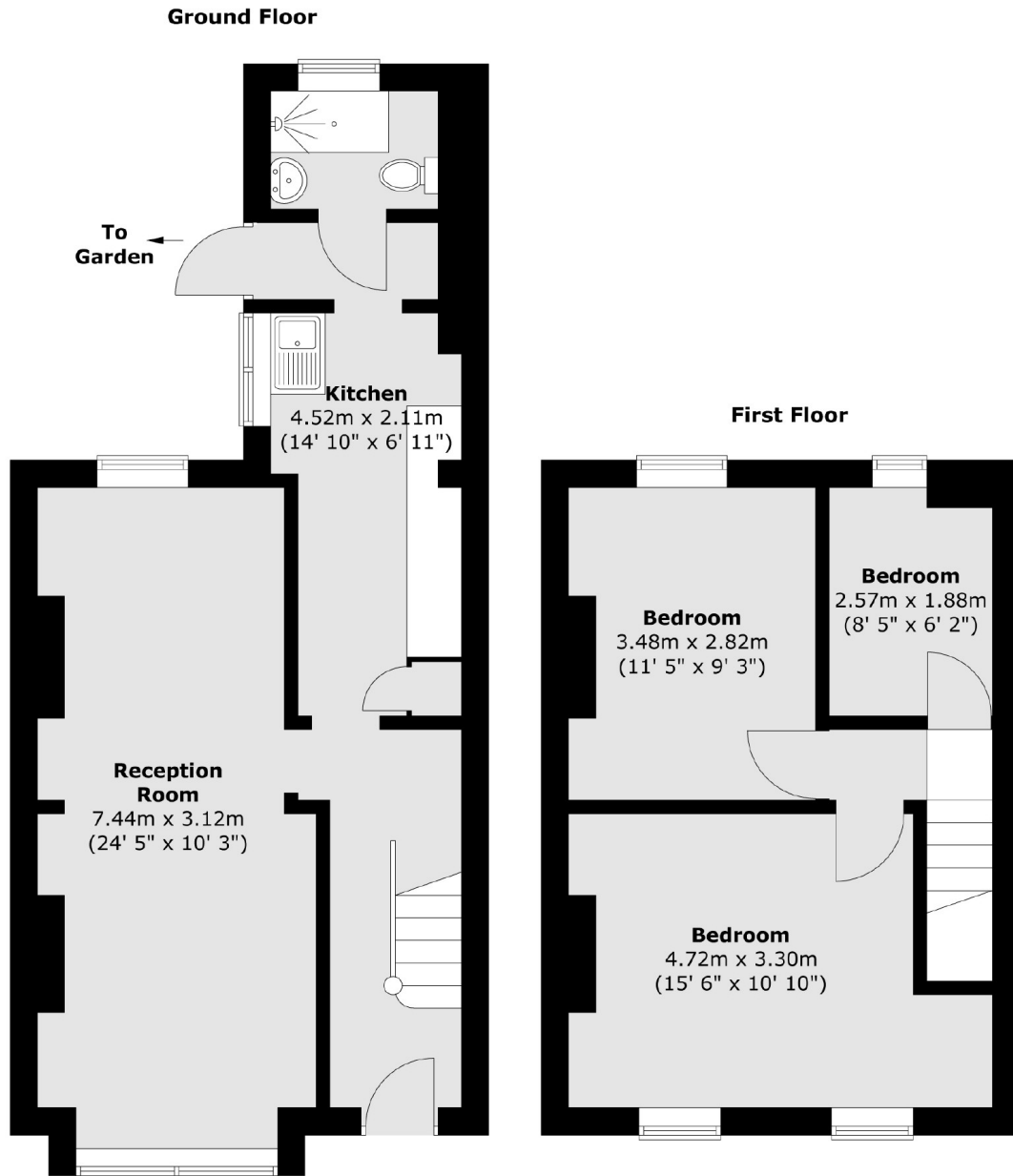
A two bedroom mid terrace Victorian house, primed and ready to be fully developed in to a show stopping three double bedroom, two bathroom house, located in the renowned 'Battles' roads.

Victory Road is in the sought after Battles' area within Wimbledon. Near the northern line, superb schools, a selection of shops, bars, restaurants, a cinema and a theatre, the area is vibrant and very popular.

### Features

- Two Double Bedrooms
- Victorian House
- Brick Fronted
- Vast Extension Potential
- Cul De Sac Street
- No Onward Chain

Victory Road,  
London, SW19



Total area (approx.) : 76.2 sq. m (820 sq. ft)