



## Henfield Road, SW19

£399,950

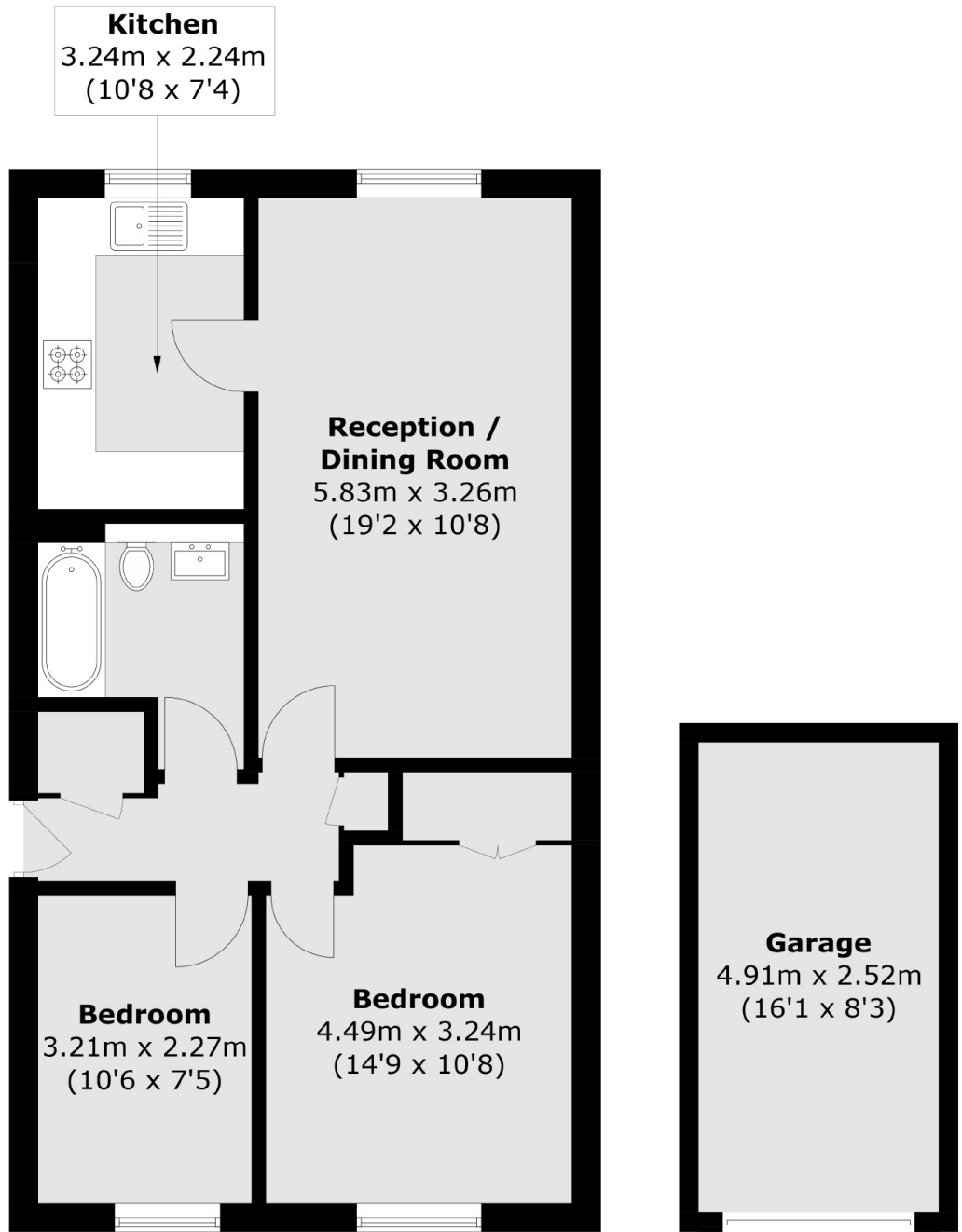
A two double bedroom top floor apartment communal gardens. There is a garage, a share of the freehold and all within the perceived catchment areas of two superb primary schools.

Henfield Road is within a sought after location near to Wimbledon Chase Primary and Dundonald Primary School and recreation ground. There is excellent transport links nearby and a superb selection of High Street branded shops, bars and popular restaurants.

### Features

- Two Double Bedrooms
- Garage In Block
- Share Of Freehold
- Communal Gardens
- Outstanding School Nearby
- No Onward Chain

Henfield Road,  
London, SW19



**Second Floor**

(Not Shown In Actual  
Location / Orientation)

Total area (approx.): 58.2 sq. m (626.4 sq. ft)  
Garage: 12.2 sq. m (131.3 sq. ft)