



Cowper Road, SW19

£450,000

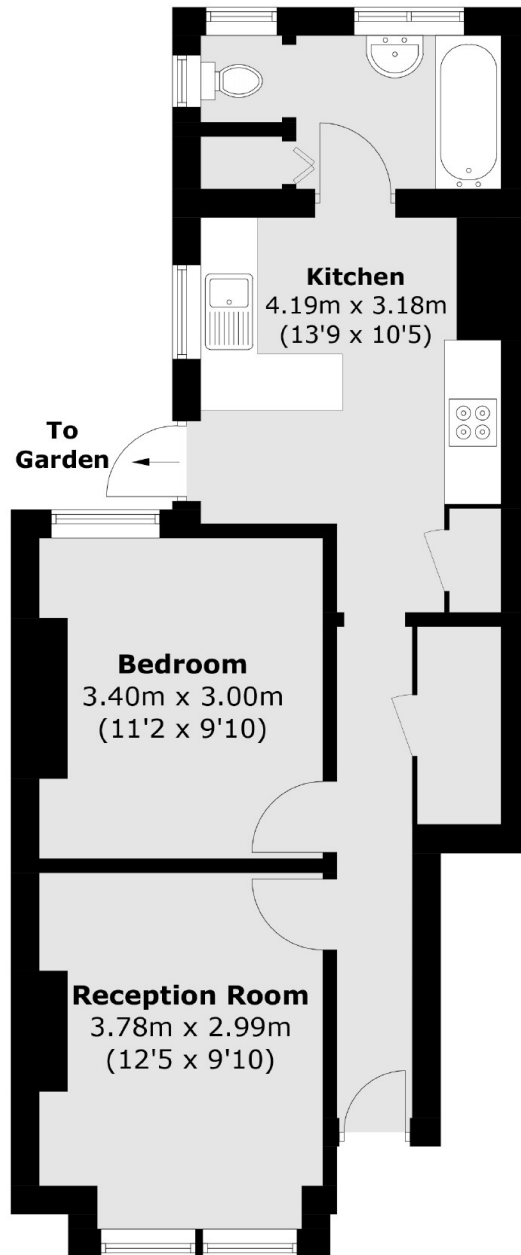
A one double bedroom ground floor garden flat, presented in beautiful condition throughout. The kitchen/ dining room is open plan, with the potential to extend, subject to consent, in to the private south facing garden.

Located within the catchment area for several primary schools and close to Haydons Road Thameslink, Wimbledon mainline and district line and two Northern line stations.

Features

- One Double Bedrooms
- Ground Floor
- South Facing Garden
- Beautifully Presented
- Extension Potential (STC)
- Victorian Conversion

Cowper Road, London, SW19



Total area (approx.): 47.5 sq. m (511.2 sq. ft)