



Elm Grove, SW19

£2,500 Per calendar month

A brand new, first floor, two bedroom apartment with a modern open plan living space and fully fitted kitchen, there is a bathroom with shower over bath and off-street parking.

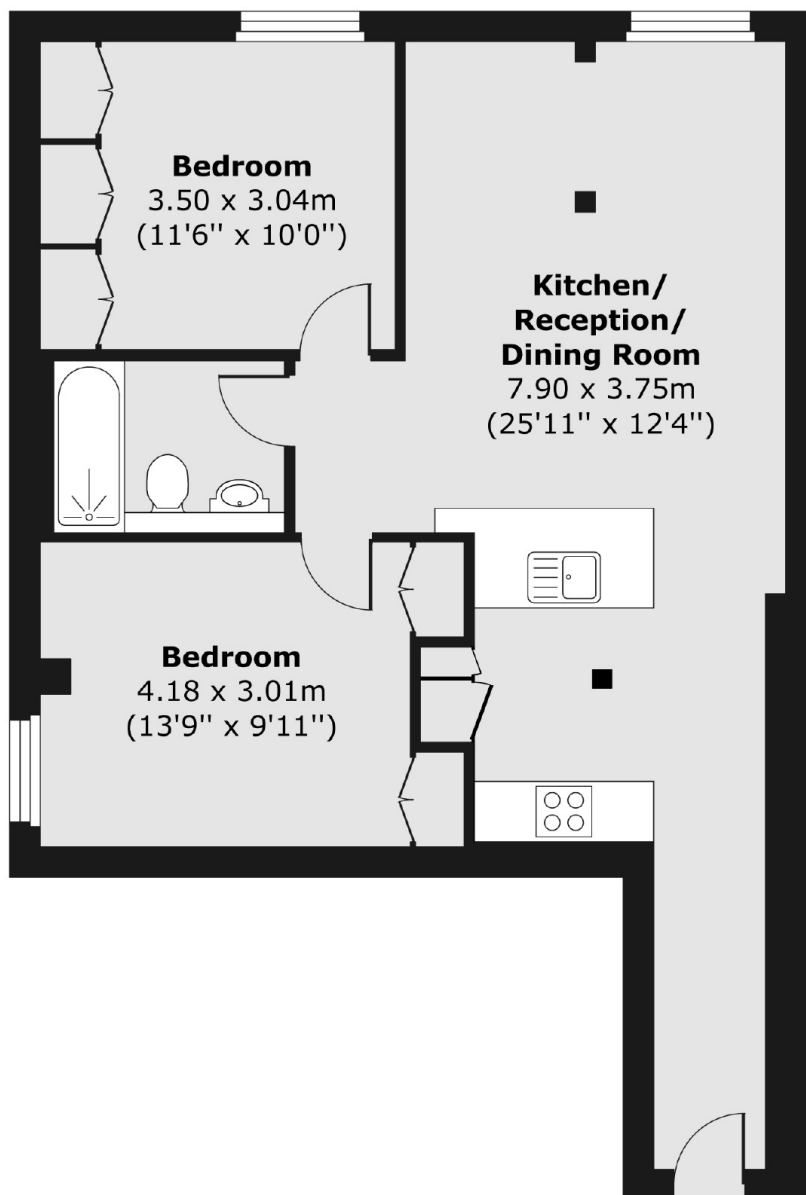
Elm Grove is cul-de-sac just over half a mile from Wimbledon Broadway and station allowing easy access to the town centre's restaurants and shops.

Features

- Two Bedrooms
- One Bathroom
- First Floor
- Parking
- Wooden Floors
- Brand New

Elm Grove, London, SW19

First Floor



Total area (approx.) 61.31 sq. m (660 sq. ft)