



Worple Road Mews, SW19

£500,000

An exceptionally well located, three bedroom first floor apartment with its own front door. The property is over eight hundred square feet, has a long lease and is presented in exceptional condition.

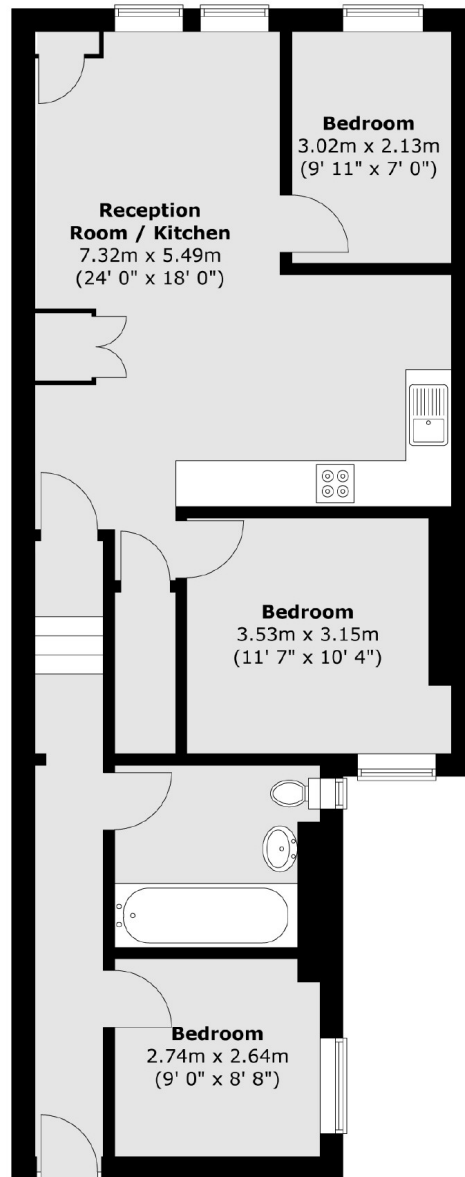
Worple Road Mews is a cobbled street located in the centre of Wimbledon, at the foot of the hill to Wimbledon Village. The District line is moments away, alongside a range of superb shops, bars and restaurants.

Features

- Three Bedrooms
- Own Front Door
- Long Lease
- First Floor
- Over 800 Square Feet
- Exceptional Location

Worple Road Mews, London, SW19

First Floor



Total area (approx.) : 74.4 sq. m (801 sq. ft)