



Marryat Road, SW19

£28,000 Per calendar month

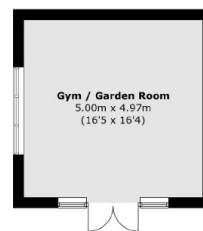
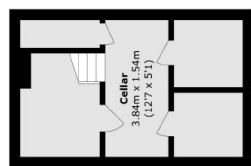
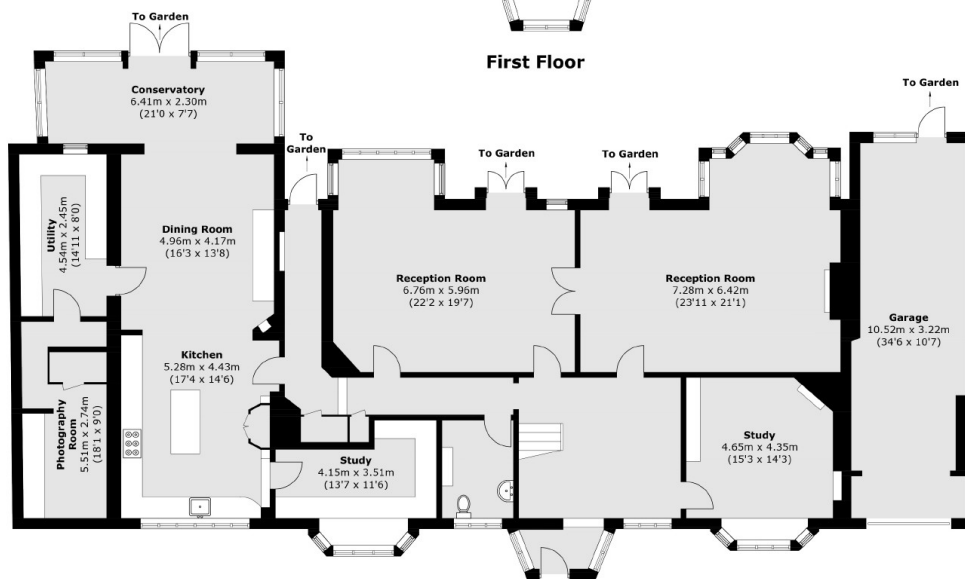
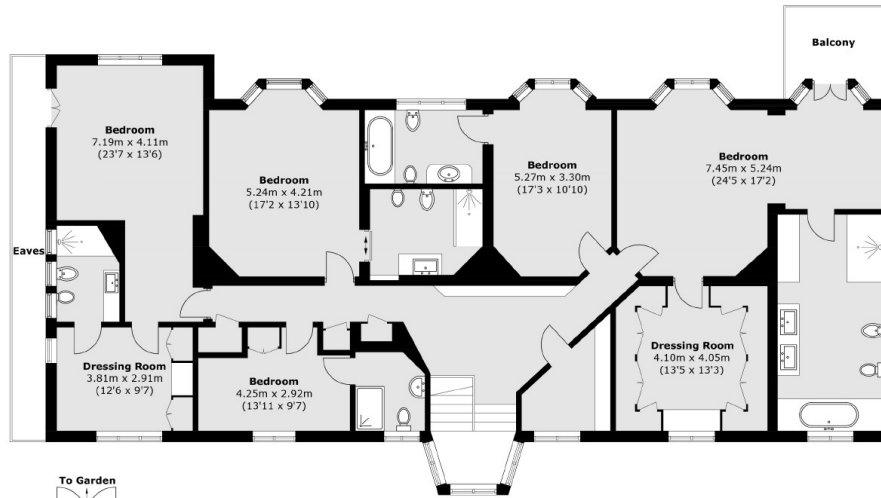
SHORT LET - The perfect example of a family home. Arrange over two floors, this five bedroom, five bathroom home offers three receptions rooms and a landscaped garden with swimming pool and gym.

Marryat Road is a highly desirable location, perpendicular to Parkside, with breath-taking views over the very best points of the London skyline. On the doorstep of The Wimbledon Tennis Club, Golf courses and private schools.

Features

- Five Bedrooms
- Five Bathrooms
- Three Receptions
- Driveway
- Swimming Pool
- Gym

Marryat Road, London, SW19



(Not Shown In Actual Location / Orientation)

Total area (approx.): 486.5 sq. m (5,236.5 sq. ft)
 Gym / Garden Room / Garage : 57.8 sq. m (622.1 sq. ft)
 Balcony (approx.): 6.6 sq. m (71.0 sq. ft)
 (Excluding Eaves)