



Hartfield Road, SW19

£525,000

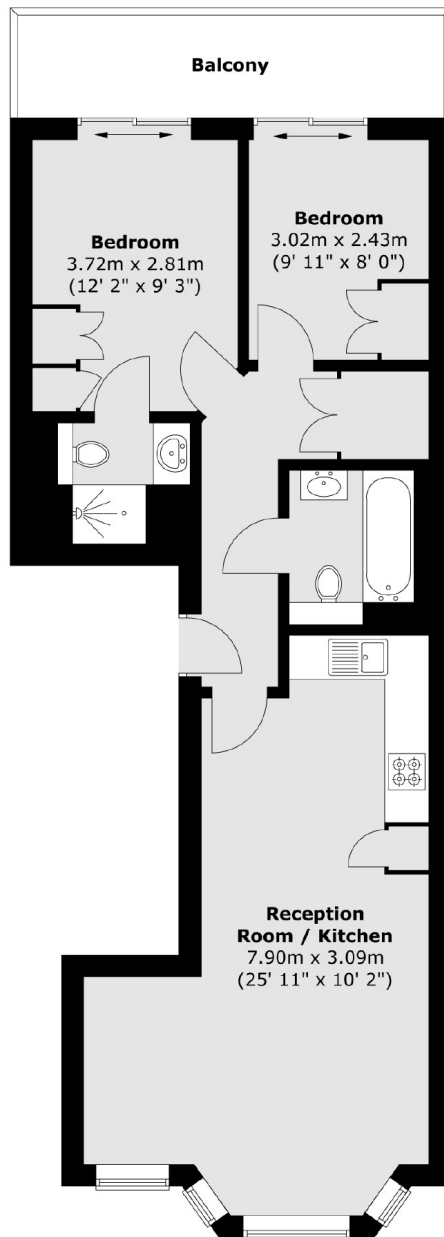
A two double bedroom, two bathroom first floor apartment, built just a few years ago. There is a private balcony, a share of freehold and the flat is located just a few metres from the centre of Wimbledon Town.

Hartfield Road is a popular street located just beside Wimbledon Town Centre. Moments from the District Line, overground station, tram link, bus routes and excellent restaurants, bars and shopping facilities.

Features

- Two Double Bedrooms
- First Floor
- Private Balcony
- Two Bathrooms
- Share Of Freehold
- Centre Of Town

Hartfield Road, London, SW19



Total area (approx.) : 62.4 sq. m (672 sq. ft)
Total balcony area (approx.) : 6.9 sq. m (74 sq. ft)

Dexters

Wimbledon
12 The Broadway
London
SW19 1RF
Sales
020 8545 8580

Energy Rating: B. We aim to make our particulars both accurate and reliable. However they are not guaranteed; nor do they form part of an offer or contract. If you require clarification on any points then please contact us, especially if you're traveling some distance to view. Please note that appliances and heating systems have not been tested and therefore no warranties can be given as to their good working order.

 **RICS** | Regulated
Estate Agent
and Letting Agent

[dexters.co.uk](https://www.dexters.co.uk)