



## Hartfield Road, SW19

£595,000

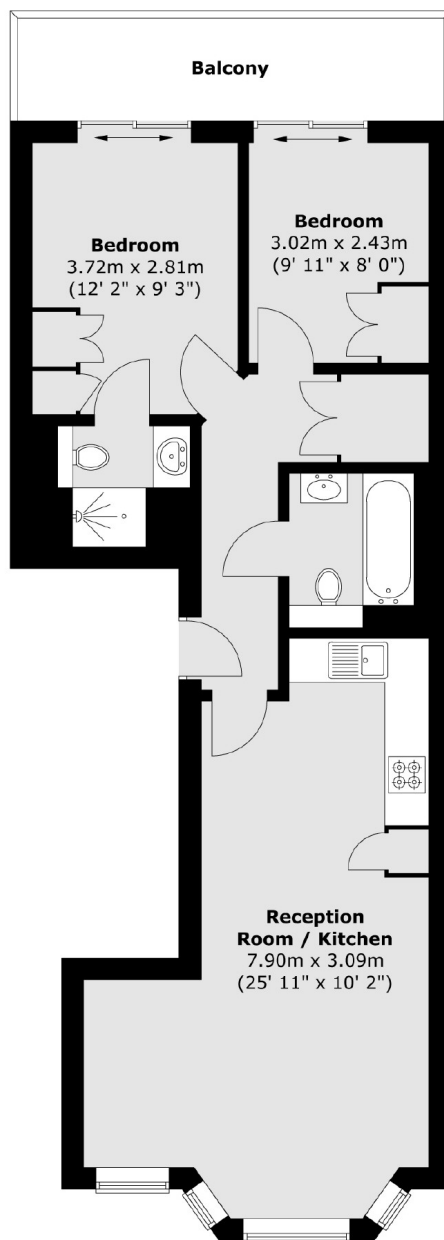
A two double bedroom, two bathroom first floor apartment, built just a few years ago. There is a private balcony, a share of freehold and the flat is located just a few metres from the centre of Wimbledon Town.

Hartfield Road is a popular street located just beside Wimbledon Town Centre. Moments from the District Line, overground station, tram link, bus routes and excellent restaurants, bars and shopping facilities.

### Features

- Two Double Bedrooms
- First Floor
- Private Balcony
- Two Bathrooms
- Share Of Freehold
- Centre Of Town

# Hartfield Road, London, SW19



Total area (approx.) : 62.4 sq. m (672 sq. ft)  
Total balcony area (approx.) : 6.9 sq. m (74 sq. ft)