



Southey Road, SW19

£649,000

One of the most beautifully renovated apartments that exists within Downings House. This split level luxury apartment is sold with basement storage, no onward chain, a parking space and a share of freehold.

Downings House is located on Southey Road, a prime location, just a short walk from Wimbledon Town Centre. The Northern Line as well as The District line are also both just a short walk away.

Features

- One/ Two Bedrooms
- Exceptionally High Ceilings
- On Site Resident Caretaker
- Listed Building
- Lift, Gym and Parking
- Share Of Freehold



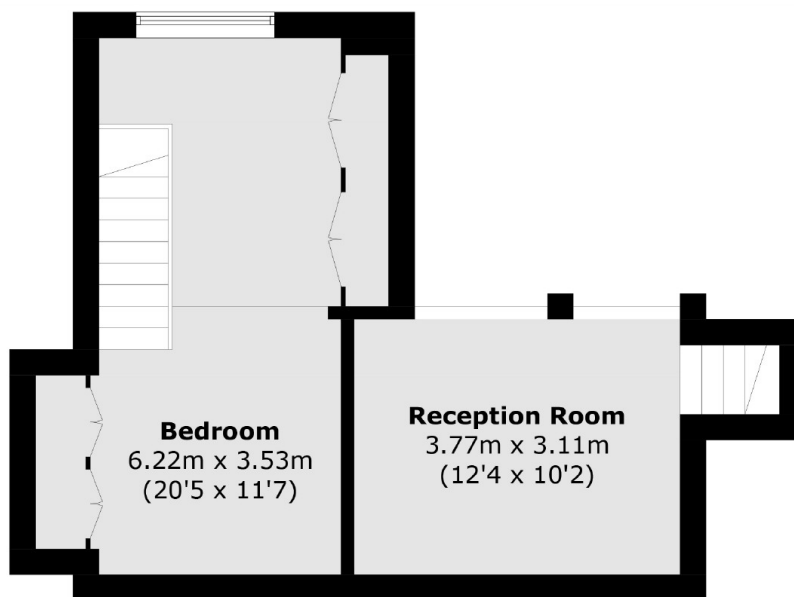
Southey Road, SW19

The building itself is hugely impressive, a converted school, the ceilings are exceptionally high both in the communal areas as well as the flat. The property is located on raised ground/ first floor with a lift in the building, the gym is on the top floor with the bike storage on the ground floor.

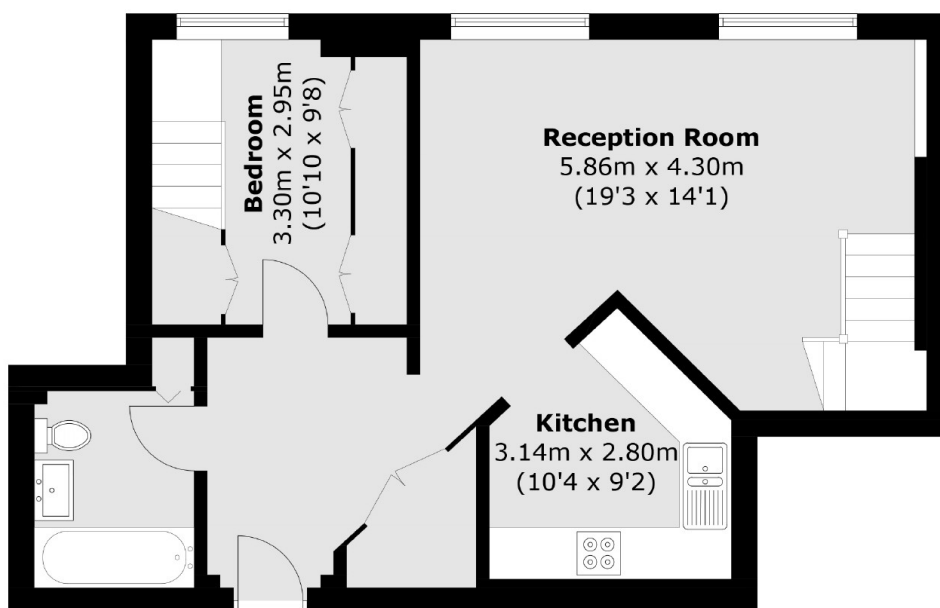
The apartment has been professionally renovated to an exceptional standard to include a newly fitted and tiled bathroom. The kitchen is separate and refitted with a wooden work surface and bright units.



Southey Road, London, SW19



First Floor



Ground Floor

Total area (approx.): 88.7 sq. m (954.8 sq. ft)