



## Mill Road, SW19

£675,000

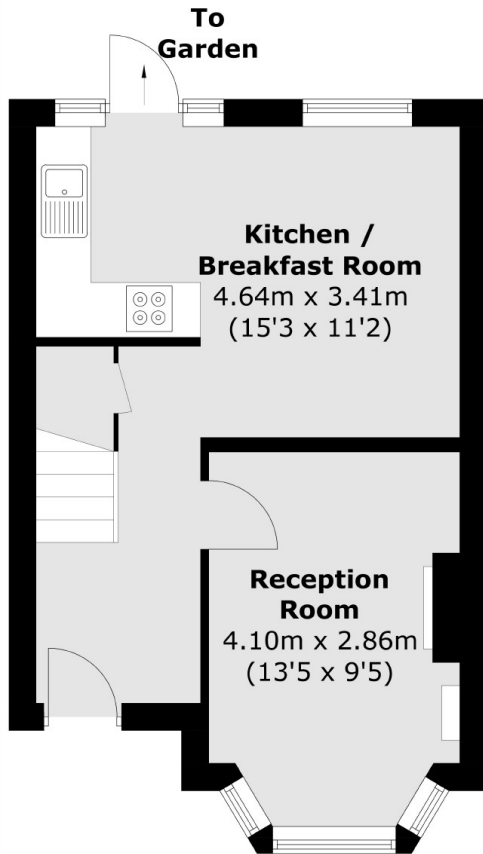
An outstanding Victorian terraced home on a quiet residential street. With two double bedrooms and potential for further expansion, this property is offered to the market with no forward chain.

Mill Road is a popular community-spirited street between Wimbledon and Colliers Wood. It is minutes from M&S, Sainsbury's and Merton Abbey Mills with its wonderful selection of amenities.

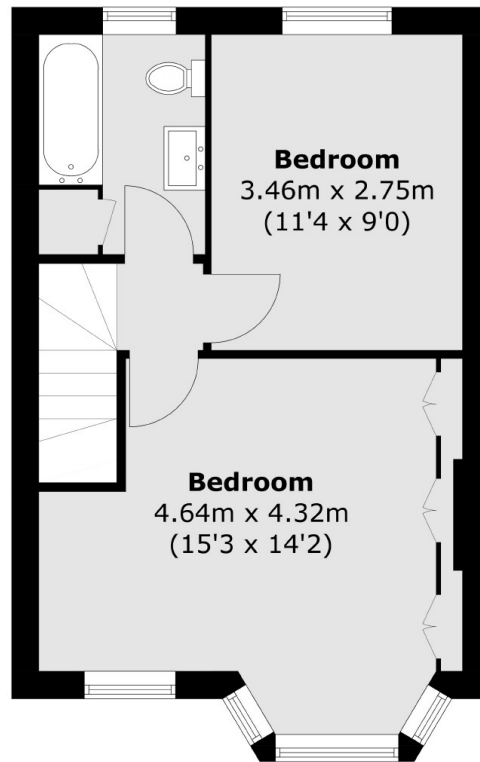
### Features

Two Double Bedrooms  
Bay-Fronted  
Victorian Terrace  
Kitchen/Breakfast Room  
Potential to Extend STPP  
No Forward Chain

Mill Road,  
London, SW19



**Ground Floor**



**First Floor**

Total area (approx.): 66.2 sq. m (712.5 sq. ft)