



Kingston Road, SW19

£269,950

A one double bedroom, second floor apartment complete with a long lease, two unallocated off street parking spaces and a superb communal garden. The property is sold with no onward chain.

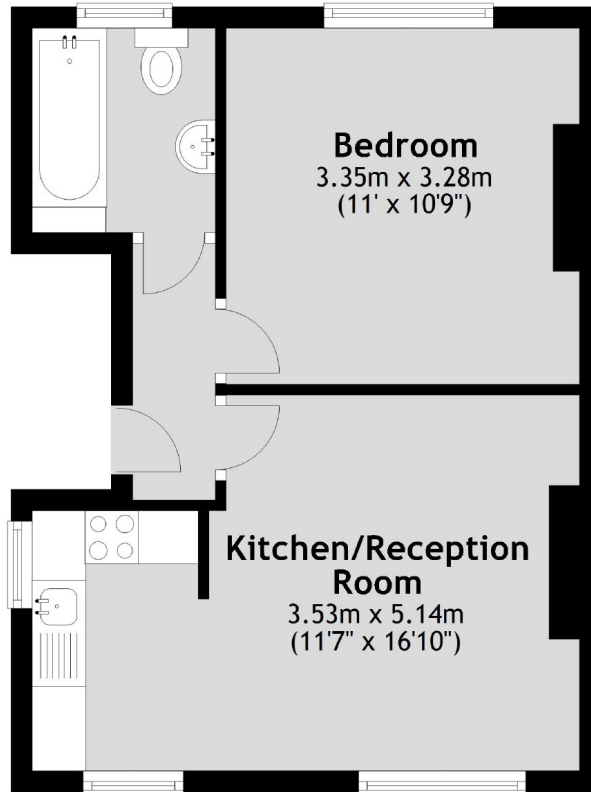
Perfectly located for Wimbledon Town Centre and Dundonald Park. Close to transport links with Wimbledon Tube, Overground Station and The Broadway offering an eclectic range of restaurants and bars.

Features

- Off Street Parking
- Long Renewed Lease
- Two Parking Spaces
- No Onward Chain
- Communal Gardens
- Victorian Conversion

**Kingston Road,
London, SW19**

Second Floor



Total area: approx. 33.4 sq. metres (359.5 sq. feet)