



Pelham Road, SW19
£1,445,000

Dexters



Pelham Road, SW19

An incredibly unique, modern and contemporary detached house located in the heart of Wimbledon. The house is arranged over two floors, with three double bedrooms, two bathrooms, south facing garden and off-street parking for two cars.

Constructed over two floors, with three double bedrooms and two bathrooms. The ground floor has an entrance lobby with a cloakroom, utility cupboard and a large open kitchen/dining room with a reception room and air conditioning. There are bi-folding doors to a terrace, perfect for entertaining. The house benefits from a lift, which can be easily removed if needed.

All of the main living areas overlook the picturesque south facing garden terrace which can be accessed from both levels of the house. The house comes complete with hot tub in the garden provided by Hydropool, lift access between both floors and off street parking for two cars with one EV charging point.

Hidden away on a quiet street just off Wimbledon Broadway, close to Wimbledon station and all amenities such as shops, bars, restaurants, and Wimbledon Theatre. Pelham Primary School is also very nearby.

Features

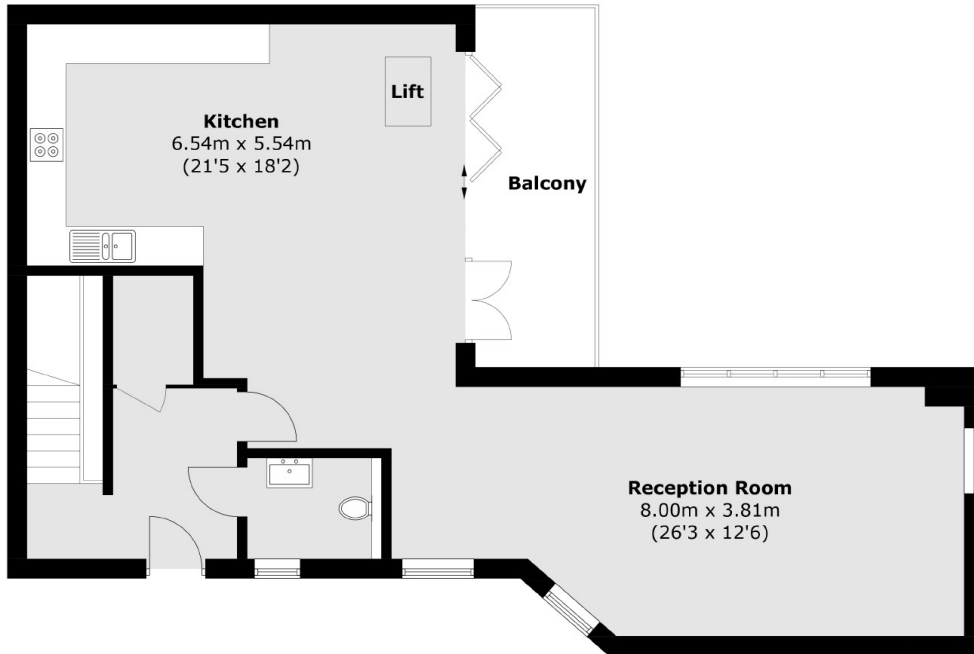
- Three Double Bedrooms
- Two Bathrooms
- Two Parking Spaces
- EV Charger
- Solar Panels
- Air Conditioning



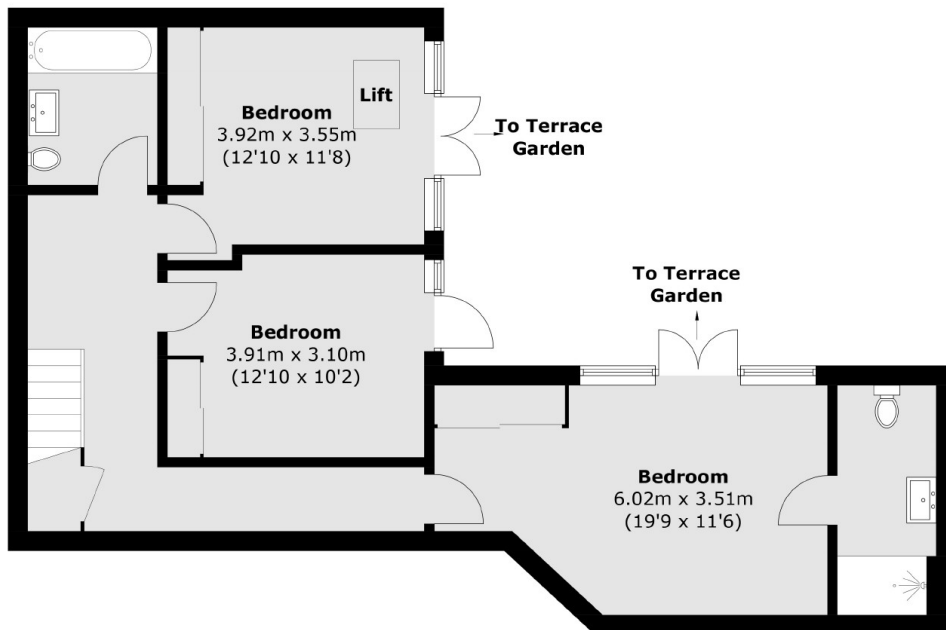




Pelham Road,
London, SW19



Ground Floor



Lower Ground Floor

Total area (approx.): 153.6 sq. m (1,653.3 sq. ft)
Balcony area (approx.): 10.0 sq. m (107.6 sq. ft)