



## Vale Crescent, SW15

£399,950

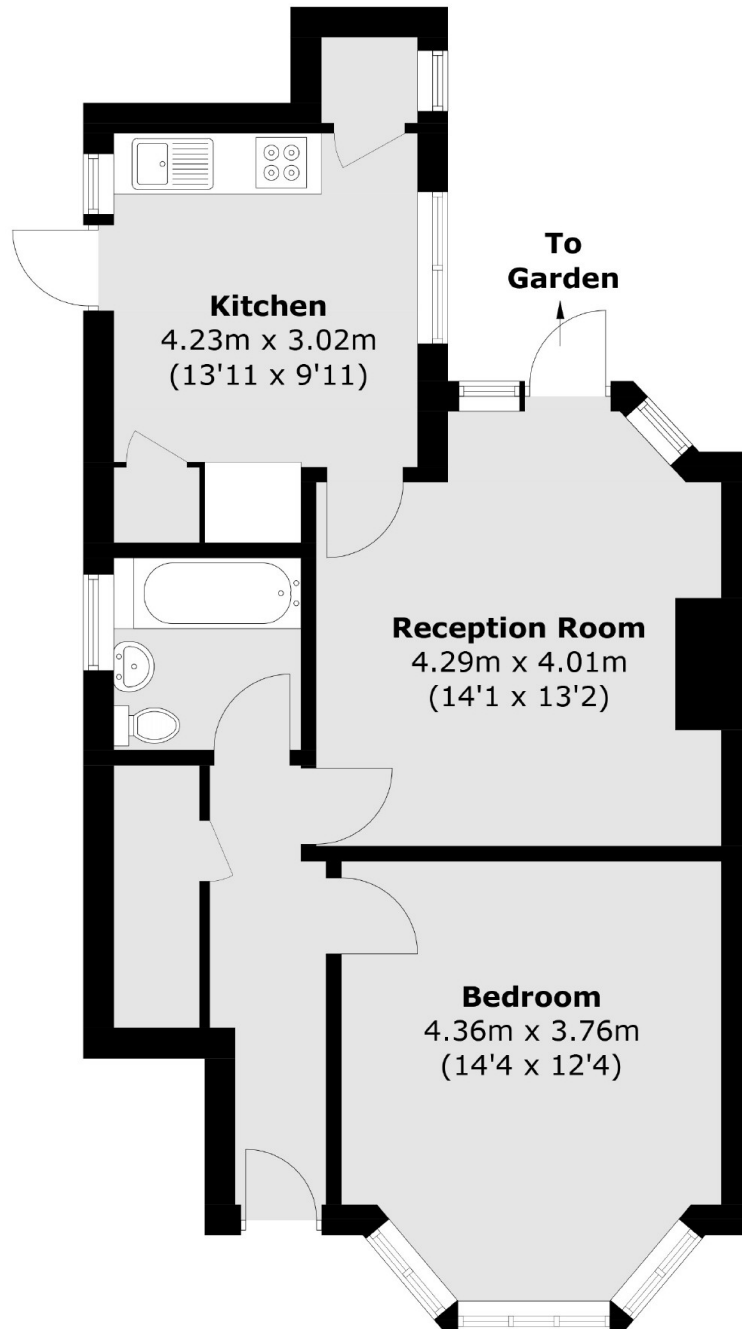
A recently refurbished, one double bedroom, ground floor maisonette with a generous private garden. The property further benefits from a long lease, garage, off street parking and is being sold with no forward chain

Vale Crescent is situated within easy reach of the many amenities of Raynes Park, Kingston-Upon-Thames and Putney with the beautiful green open spaces of both Wimbledon Common and Richmond Park surrounding the property.

### Features

- Ground Floor Maisonette
- One Double Bedroom
- Recently Refurbished
- Large Private Garden
- Garage and Off Street Parking
- No Onward Chain

# Vale Crescent, London, SW15



Total area (approx.): 56.2 sq. m (604.9 sq. ft)