



Inner Park Road, SW19

£1,450 Per calendar month

A one bedroom apartment set in a mansion block that has a separate bedroom with built in wardrobes and living room with a modern kitchen and bathroom. This property is perfect for a working professional or couple.

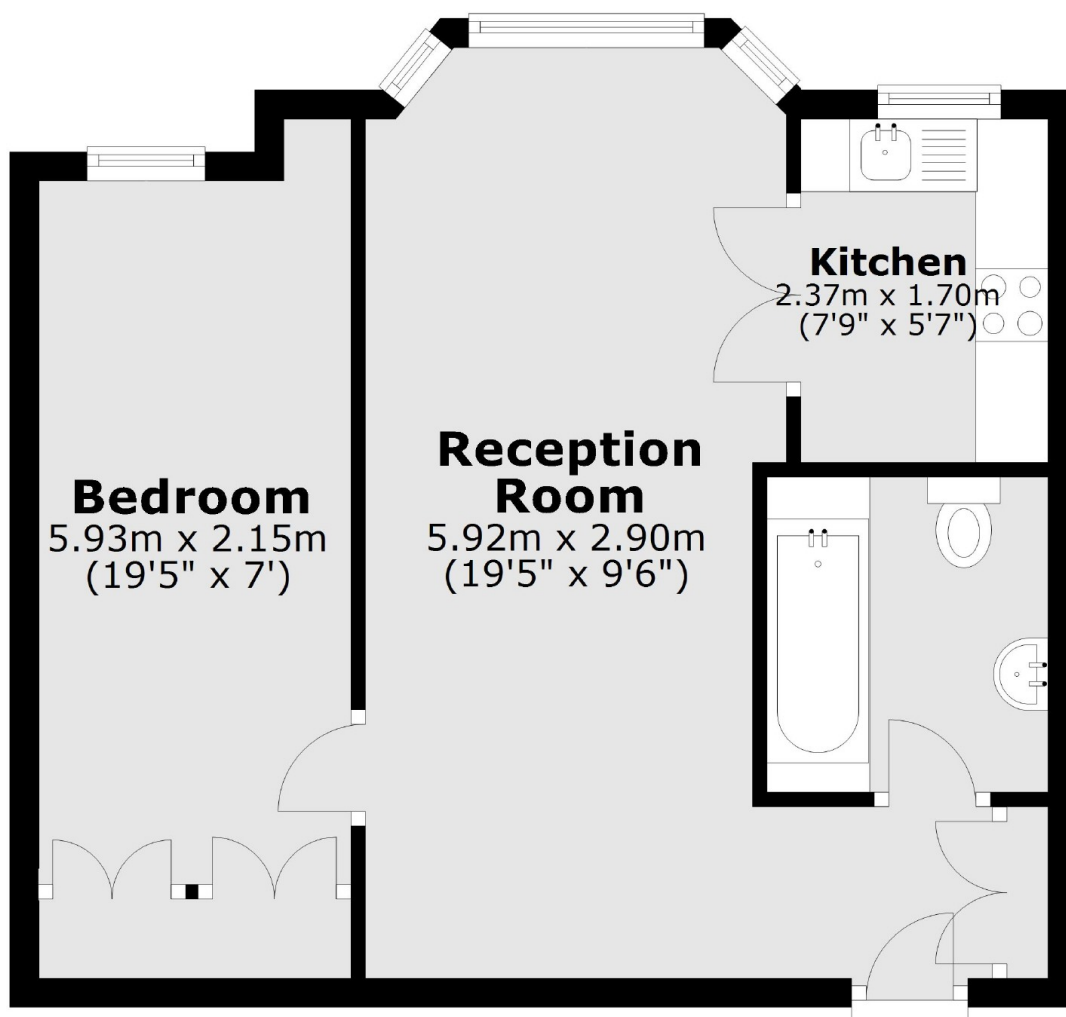
The property has easy access to Southfields as well as Wimbledon Village. It is also well situated for the green spaces of Wimbledon Common & Wimbledon Park.

Features

- One Bedroom
- Modern Bathroom
- Separate Kitchen
- Wandsworth Council Tax
- Close to the Common
- Mansion Block

Inner Park Road,
London, SW19

Second Floor



al area: approx. 41.5 sq. metres (446.4 sq. fe