



## Kingston Road, SW20

£2,100 Per calendar month

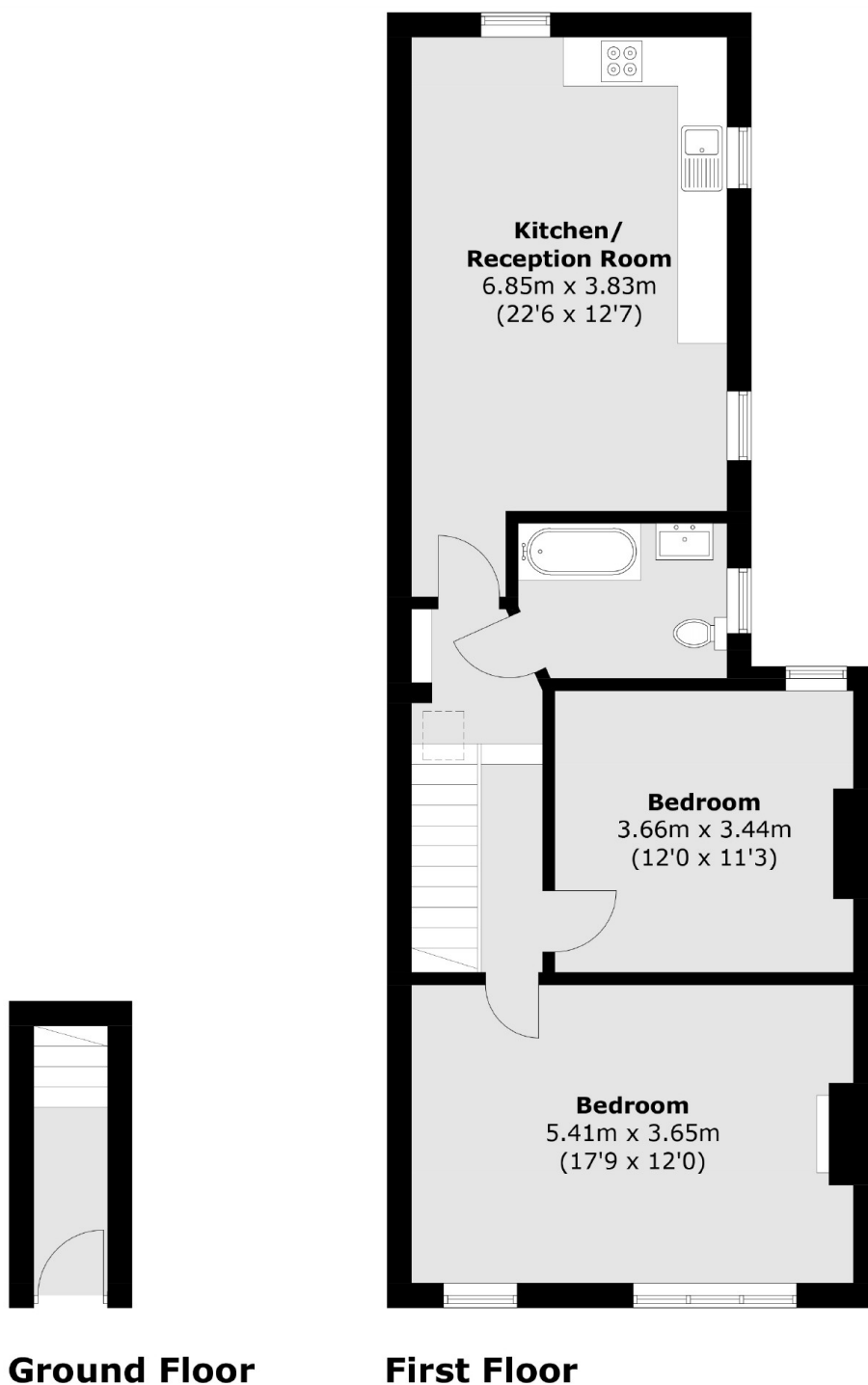
This two double bedroom, first floor maisonette has been completely refurbished and offers a large open-plan living room and brand new kitchen at the rear as well as a fully tiled bathroom.

The property is a short distance from Prince Georges playing fields, David Lloyd gym and all of the local amenities of Raynes Park that include a Waitrose supermarket.

### Features

- Two Double Bedrooms
- First Floor
- Maisonette
- Refurbished
- New Kitchen
- New Bathroom

# Kingston Road, London, SW20



Total area (approx.): 72.9 sq. m (784.7 sq. ft)