



East Road, SW19

£840,000

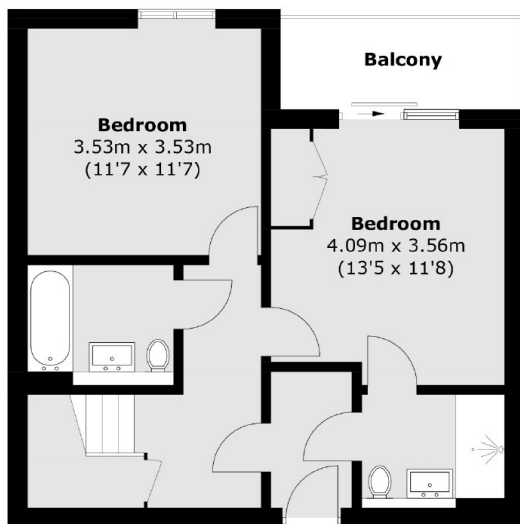
A duplex apartment spread over the first and second floors. There are three double bedrooms, two bathrooms and a large balcony accessible via sliding doors from the kitchen/diner. There are communal facilities such as a concierge, gym and work space!

East Road is a tucked away location with the benefit of being well located but also a quiet area close to Colliers Wood Northern Line. The green open spaces of the Wandle Meadow Nature Park and Haydons Road Recreation Ground are also very nearby.

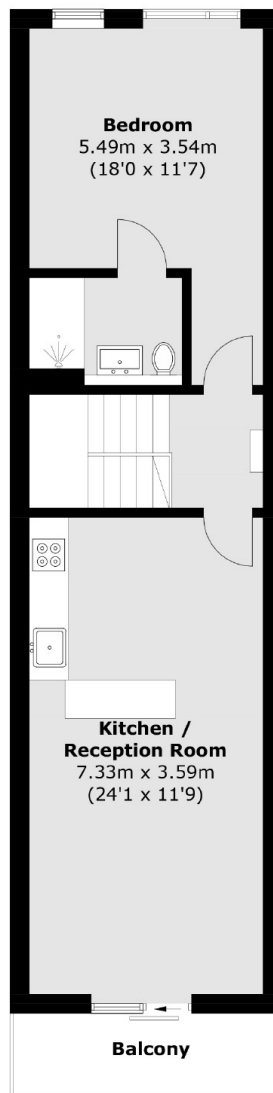
Features

- Three Double Bedrooms
- Duplex Apartments
- Three Double Bedrooms
- Allocated Parking Space **
- Private Roof Terrace
- Private Resident Lounge & Gym

East Road, London, SW19



First Floor



Second Floor

Total area (approx.): 103.3 sq. m (1,111.8 sq. ft)
Balcony area : 10.3 sq. m (110.8 sq. ft)