



Blenheim Road, SW20

£575,000

A two bedroom newly renovated Edwardian period conversion apartment with a share of the freehold and a private garden. The large kitchen/dining/living room has access to the private garden, there is also an allocated parking space and share of the freehold.

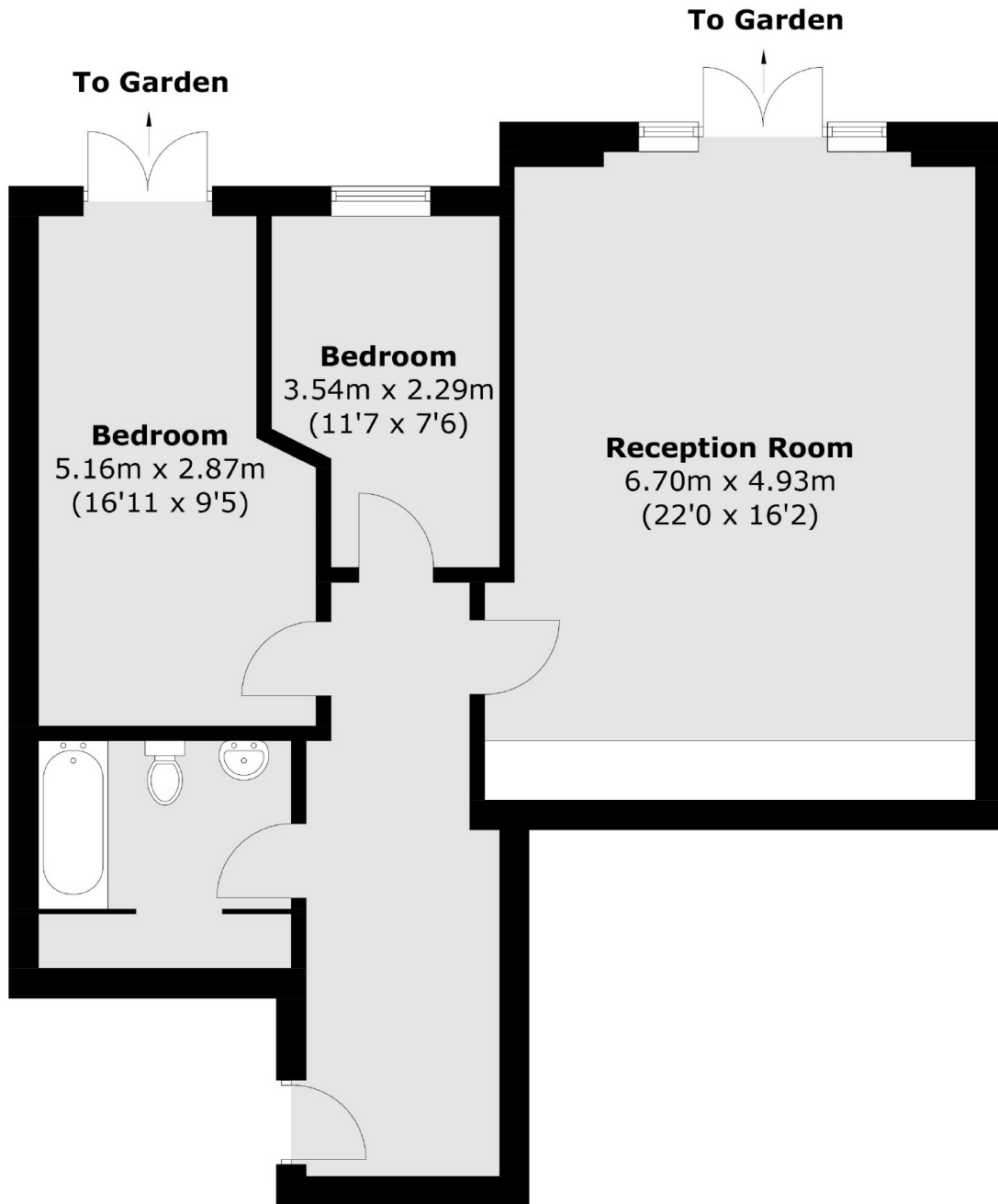
** Ready to move into in early 2024.**

This property is nestled within the peaceful embrace of Blenheim Road which is a cul-de-sac road discreetly positioned off Grand Drive SW20. It is nearby to Raynes Park Station which has a great service into Wimbledon, Clapham and Waterloo.

Features

- Edwardian Period Conversion
- Ground Floor Garden Flat
- Two Bedrooms
- Allocated Parking Space
- Share Of The Freehold
- Quiet Cul-De-Sac Road

Blenheim Road,
London, SW20



Total area (approx.): 71.3 sq. m (767.5 sq. ft)

Dexters

Wimbledon
12 The Broadway
London
SW19 1RF
Sales
020 8545 8580

Energy Rating: . We aim to make our particulars both accurate and reliable. However they are not guaranteed; nor do they form part of an offer or contract. If you require clarification on any points then please contact us, especially if you're traveling some distance to view. Please note that appliances and heating systems have not been tested and therefore no warranties can be given as to their good working order.

 **RICS** | Regulated
Estate Agent
and Letting Agent

dexters.co.uk