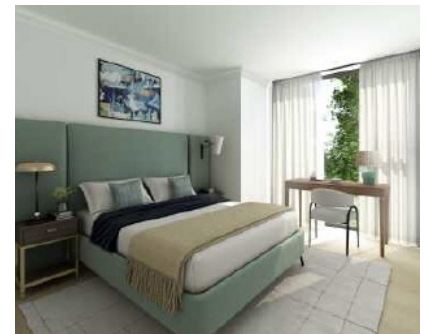


SED



South London



## Blenheim Road, SW20

### £625,000

A two bedroom newly built Edwardian period conversion apartment with a share of the freehold and a private garden. The large kitchen/dining/living room has access to the private garden, there is also an allocated parking space and share of the freehold.

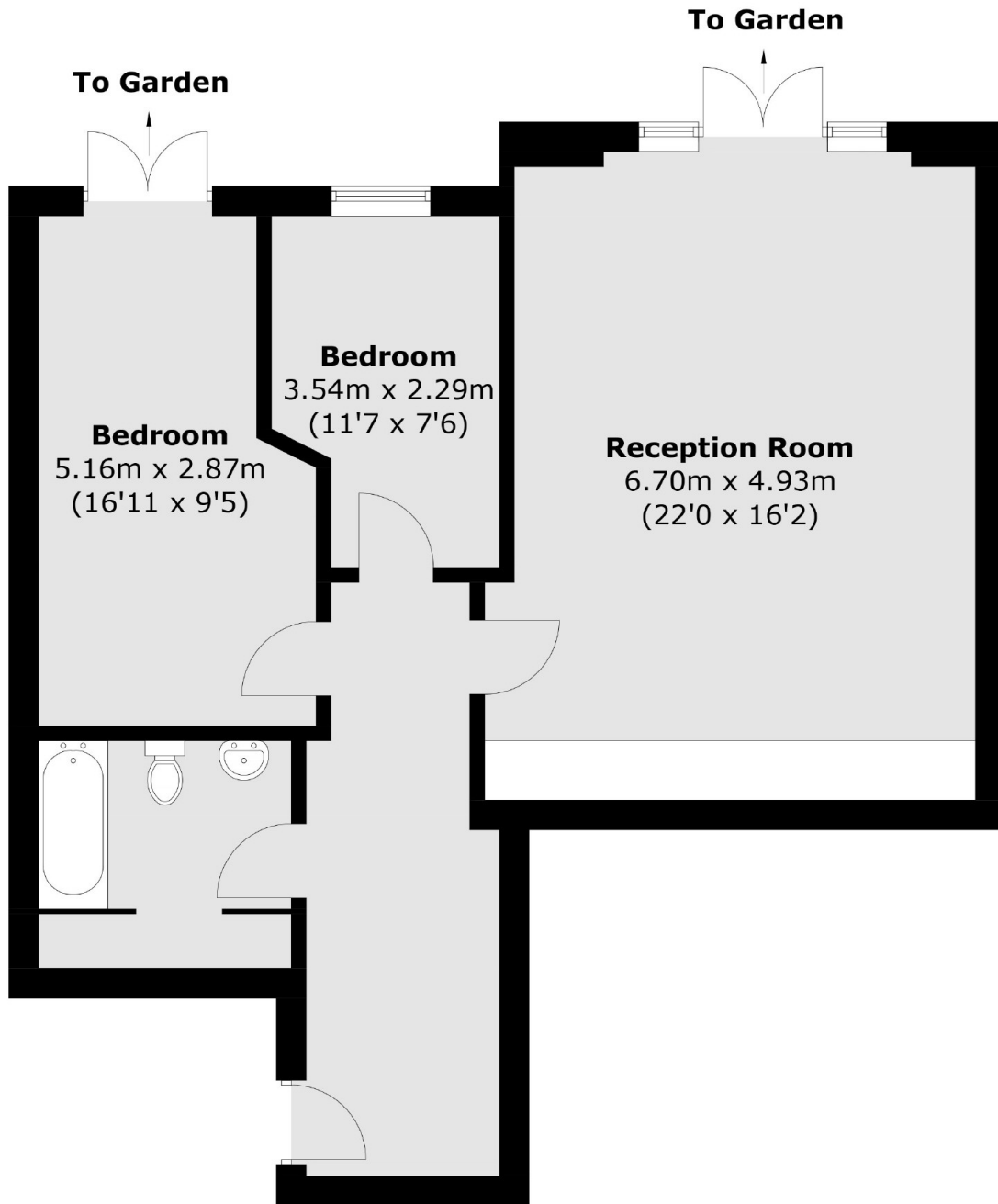
\*\* Ready to move into in early 2024. Please note the CGI's are designed for representative purposes only.

This property is nestled within the peaceful embrace of Blenheim Road which is a cul-de-sac road discreetly positioned off Grand Drive SW20. It is nearby to Raynes Park Station which has a great service into Wimbledon, Clapham and Waterloo.

### Features

- Edwardian Period Conversion
- Ground Floor Garden Flat
- Two Bedrooms
- Allocated Parking Space
- Share Of The Freehold
- Quiet Cul-De-Sac Road

Blenheim Road,  
London, SW20



Total area (approx.): 71.3 sq. m (767.5 sq. ft)