



Greenview Drive, SW20

£390,000

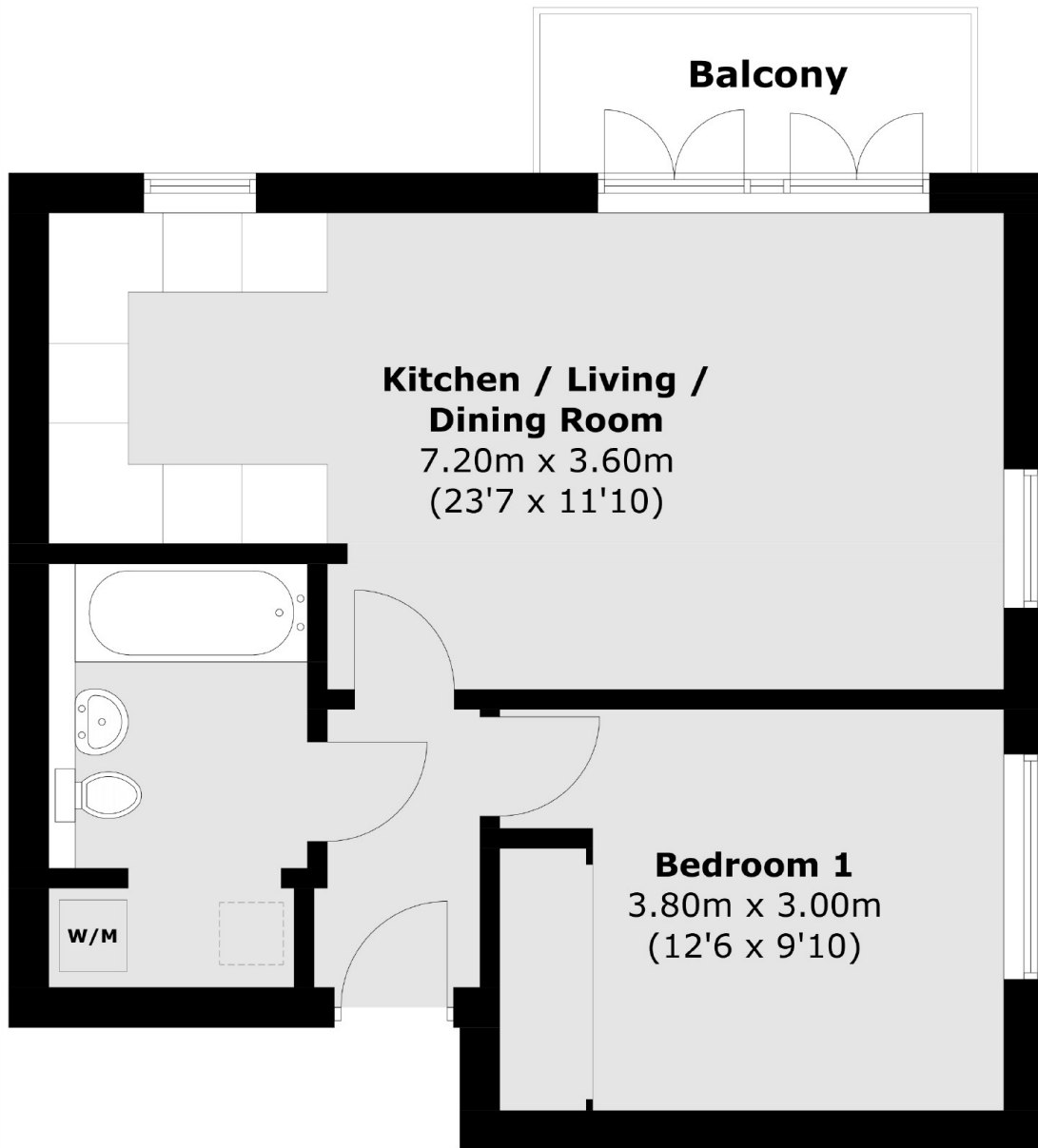
** Move in Q3 2024. A one double-bedroom apartment with a large balcony and an allocated parking space. Newly built this high-specification apartment has German appliances throughout, underfloor heating in the bathroom and energy-efficient boilers.

Raynes Park is a charming suburban district located in the southwest of London, England. It is part of the London Borough of Merton and offers a unique blend of urban convenience and a green, residential atmosphere.

Features

- One Double Bedroom
- Large Balcony
- Open Plan Kitchen-Diner
- Lift To All Floors
- Allocated Parking Space
- Highly Energy Efficient
- Plenty Of Storage
- Penthouse Collection!

Greenview Drive,
London, SW20



Fourth Floor

Total area (approx.): 45.8 sq. m (493.0 sq. ft)
Balcony: 3.9 sq. m (42.0 sq. ft)

Dexters

Wimbledon
12 The Broadway
London
SW19 1RF
Sales
020 8545 8580

Energy Rating: . We aim to make our particulars both accurate and reliable. However they are not guaranteed; nor do they form part of an offer or contract. If you require clarification on any points then please contact us, especially if you're traveling some distance to view. Please note that appliances and heating systems have not been tested and therefore no warranties can be given as to their good working order.

 **RICS** | Regulated
Estate Agent
and Letting Agent

dexters.co.uk