



Station Road, SW19

£675,000

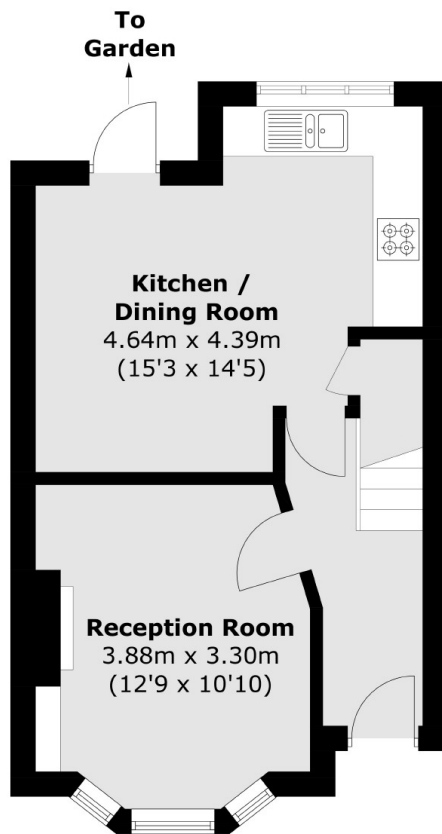
This two bedroom, Victorian house is located in a very desirable area of South Wimbledon. The house has the potential to extend STTP, off street parking and is offered to the market with no onward chain.

Station Road is a popular and quiet road between Wimbledon and Colliers Wood. Both Wandle Park and Haydons Recreation Grounds are nearby and the local area has a good selection of shops and restaurants to enjoy.

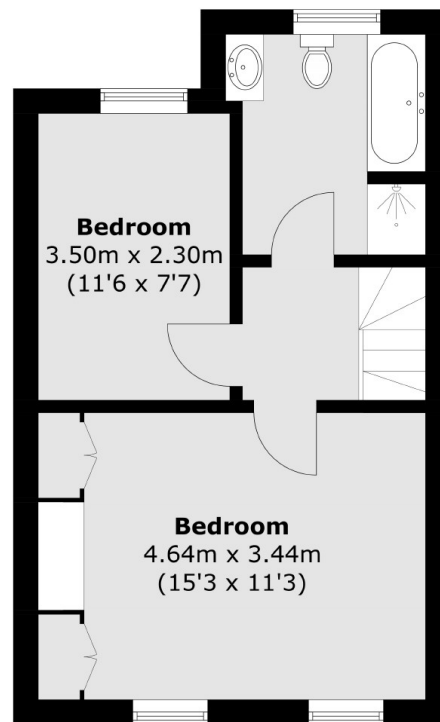
Features

- Two Double Bedrooms
- Bay-Fronted
- Victorian Terrace
- Off Street Parking
- Potential to Extend STTP
- No Onward Chain

Station Road, , SW19



Ground Floor



First Floor

Total area (approx.): 70.4 sq. m (757.8 sq. ft)