



South Park Road, SW19

£325,000

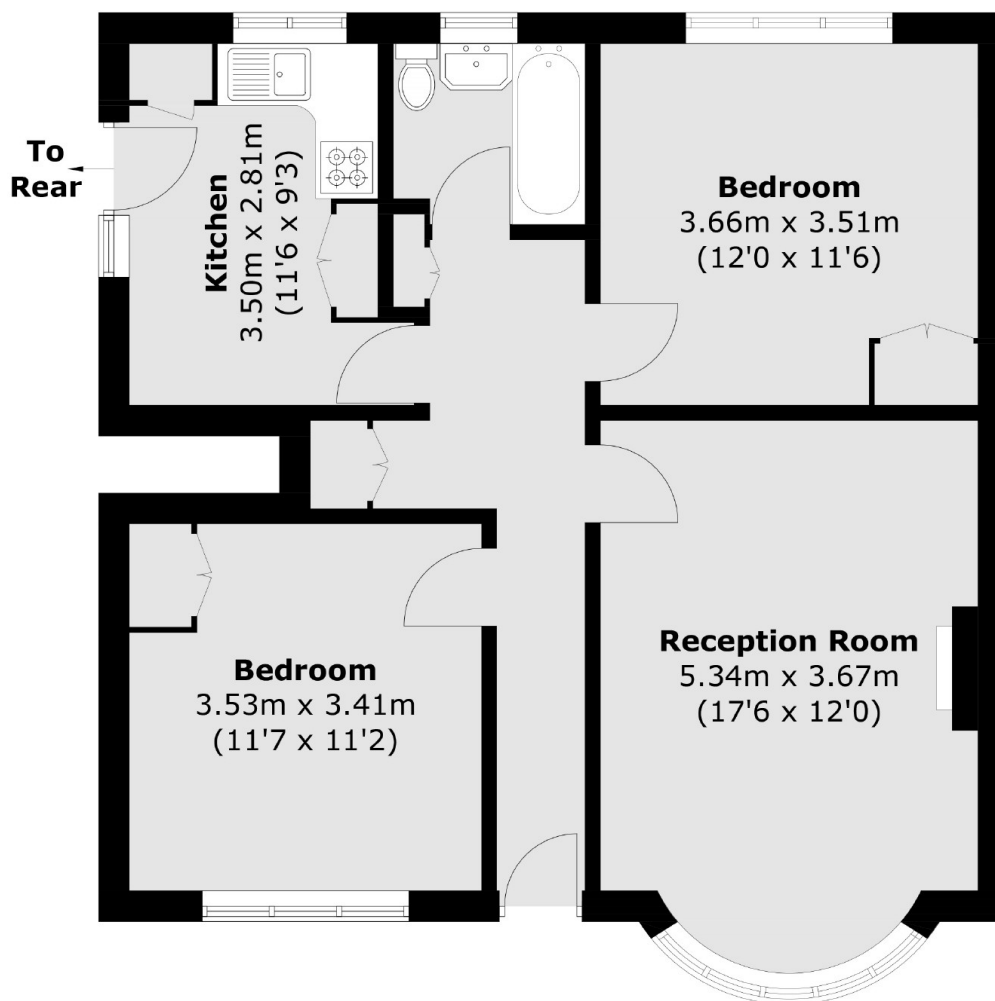
A two double bedroom, ground floor apartment requiring full modernisation throughout. Located in the heart of the ever desirable 'South Park Gardens' area moments from Wimbledon Centre, sold with no onward chain, albeit, a lease of circa 35 years.

South Park Road is a popular tree lined road next to South Park Gardens. This area has a fantastic selection of High Street brand shops, popular restaurants and excellent transport links just a short walk away.

Features

- Lease Circa 35 Years
- Ground Floor
- Garage
- South Park Gardens
- Needing Full Modernisation
- No Onward Chain

South Park Road, London, SW19



Total area (approx.): 66.9 sq. m (720.1 sq. ft)