



**Rokeby Place, SW20**

**£2,000,000**

**Dexters**



## Rokeby Place, SW20

Rarely available, this double fronted detached house is located in an exclusive development in Wimbledon Village. There's a double garage and a large west facing garden.

The house has a stunning double fronted aspect, three reception areas and a central fireplace. There are plans in place to drastically alter the rear of the house, extending and re-designing the kitchen and utility area to offer an annexe style bedroom and bathroom.

The first floor has four double bedrooms, and two bathrooms and still retains the ability to be able to have the loft converted which will likely, with the ground floor works, turn the house into over three thousand square feet. Externally there's a double garage, side access to the large west facing garden and parking for at least four cars (With one behind the other).

Wimbledon Common and Village are close by with an array of designer shops, historic pubs and restaurants. The area has some highly regarded and sought-after local and independent schools.

### Features

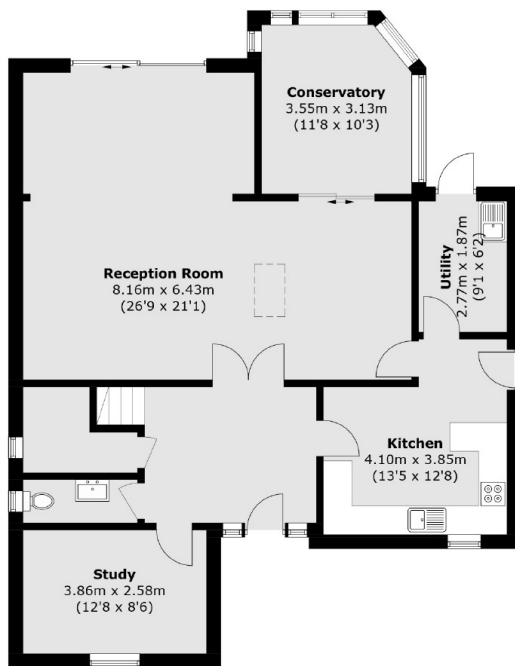
- Lateral Over Two Floors
- Over 2,000 Square Feet
- Detached Double Fronted
- Exclusive Development
- Huge Extension Potential
- Large West Facing Garden



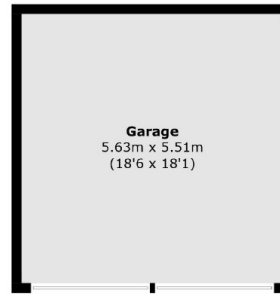




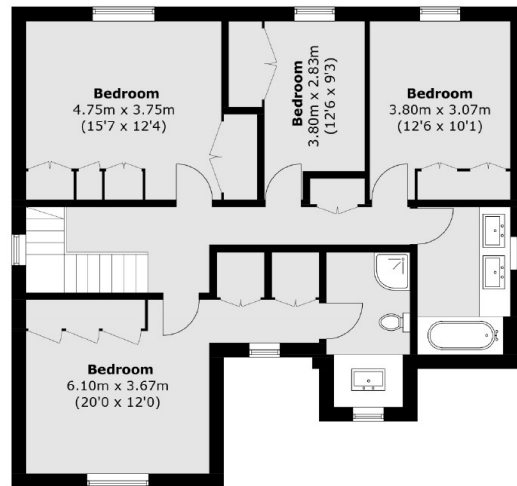
# Rokeby Place, London, SW20



**Ground Floor**



(Not Shown In Actual  
Location / Orientation)



**First Floor**

Total area (approx.): 187.2 sq. m (2,015.0 sq. ft)  
Garage area (approx.): 31.1 sq. m (334.8 sq. ft)