



Lansdowne Road, SW20

£4,500 Per calendar month

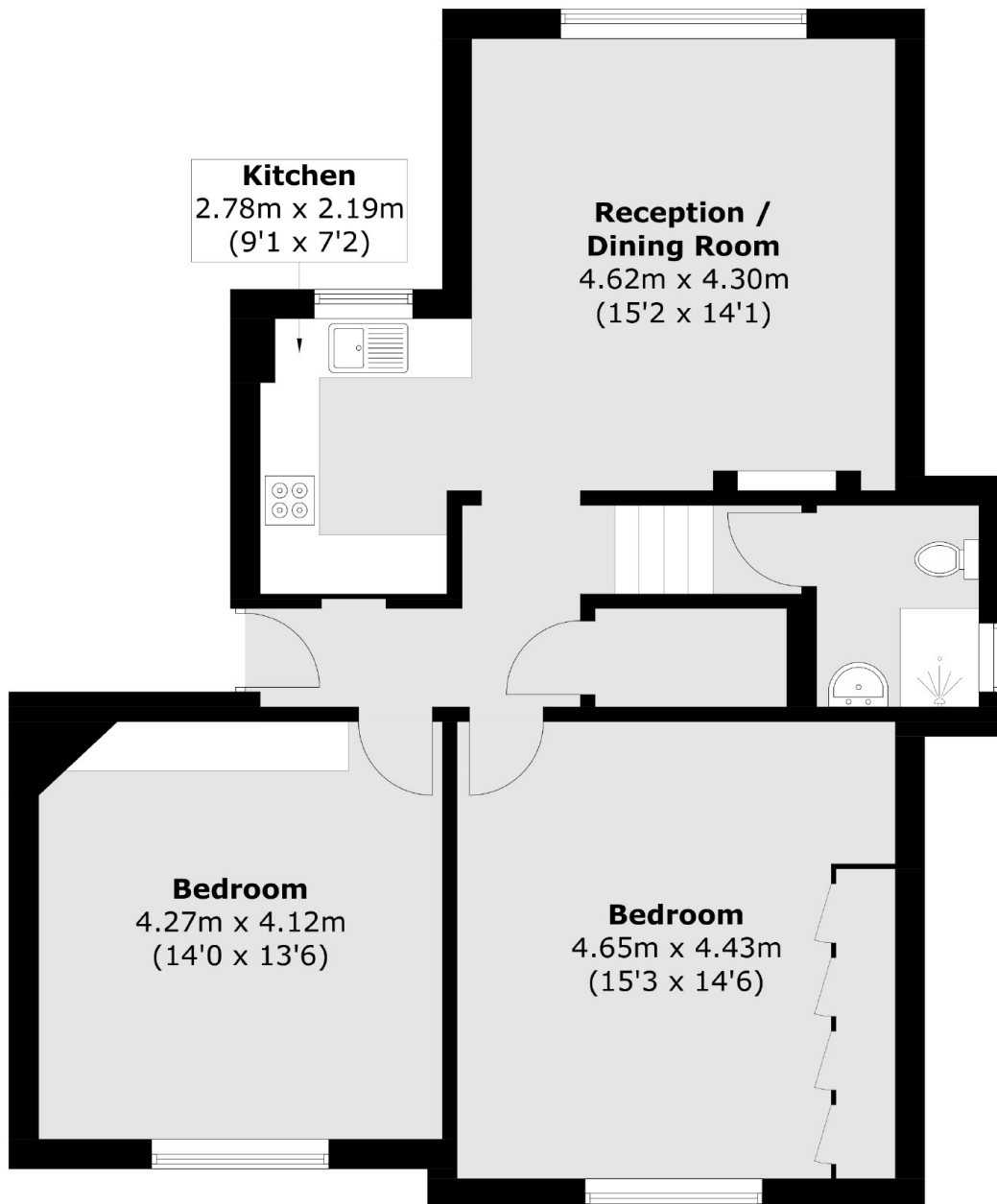
SHORT LET - A two double bedroom apartment that has been completely modernised, offering a living room with space to work, a separate integrated kitchen, wooden flooring throughout and an electric fire.

Located on a highly regarded road, nestled amongst exceptional period houses. Transport is easily accessible from both Wimbledon and Raynes Park and the green open spaces of Wimbledon Common are just a short walk.

Features

SHORT LET
Two Bedrooms
One Bathroom
Modern
Wooden Flooring
Wimbledon Common

Lansdowne Road, London, SW20



Total area (approx.): 79.3 sq. m (853.6 sq. ft)