



Palmerston Road, SW19

£395,000

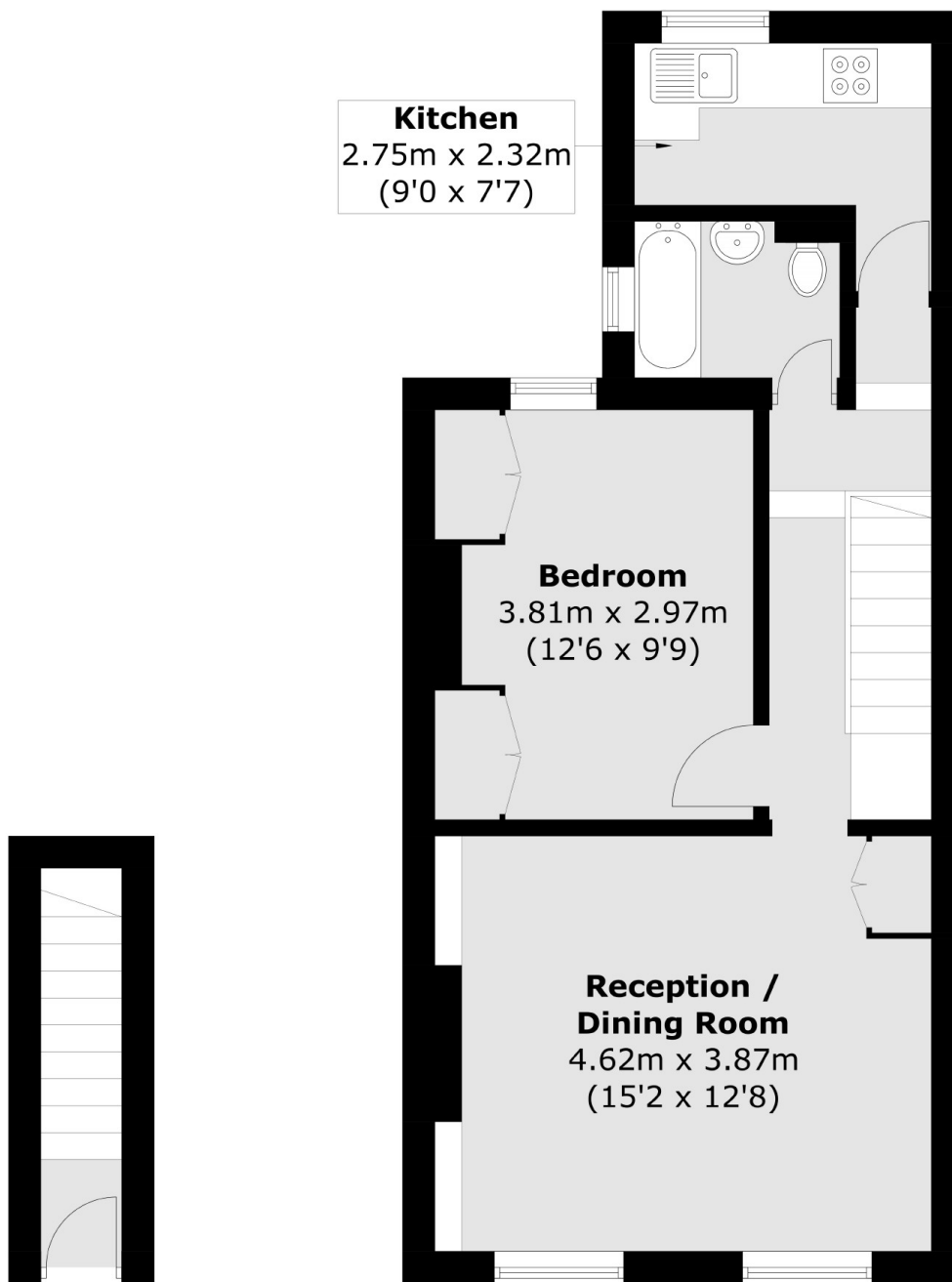
A one double bedroom, first floor Victorian conversion flat. The flat is sold with a share of freehold, the potential to extend in to the loft and no onward chain.

Located on a quiet street just off The Broadway, moments from the District Line, overground station, tram link and bus routes. Shops, bars and delicious restaurants are all on your doorstep.

Features

- One Double Bedroom
- Loft Conversion Potential
- Share Of Freehold
- No Onward Chain
- Victorian Conversion
- Central Wimbledon Location

Palmerston Road, London, SW19



Ground Floor

First Floor

Total area (approx.): 48.0 sq. m (516.6 sq. ft)