



Wimbledon Hill Road, SW19

£875,000

Dexters



Wimbledon Hill Road, SW19

One of the few apartments in the building that has its own, expansive terrace overlooking the manicured communal gardens. There are two double bedrooms, two bathrooms and an underground parking space.

Aspen Lodge is a small development at the base of Wimbledon Hill. At the front of the building there is access via two electric gates to underground parking, with step free access to a lift to all floors. The flat is located on the raised ground floor, with a large receiving hallway.

The two bedrooms are both good sizes, the master has an ensuite shower room and access to the private terrace to the rear measuring nearly 350 square feet. There is a large separate kitchen with a window, which is large enough to install a breakfast bar.

To the front there are sliding doors and a Juliette balcony with the communal gardens just below you. There is no onward chain and a share of the freehold.

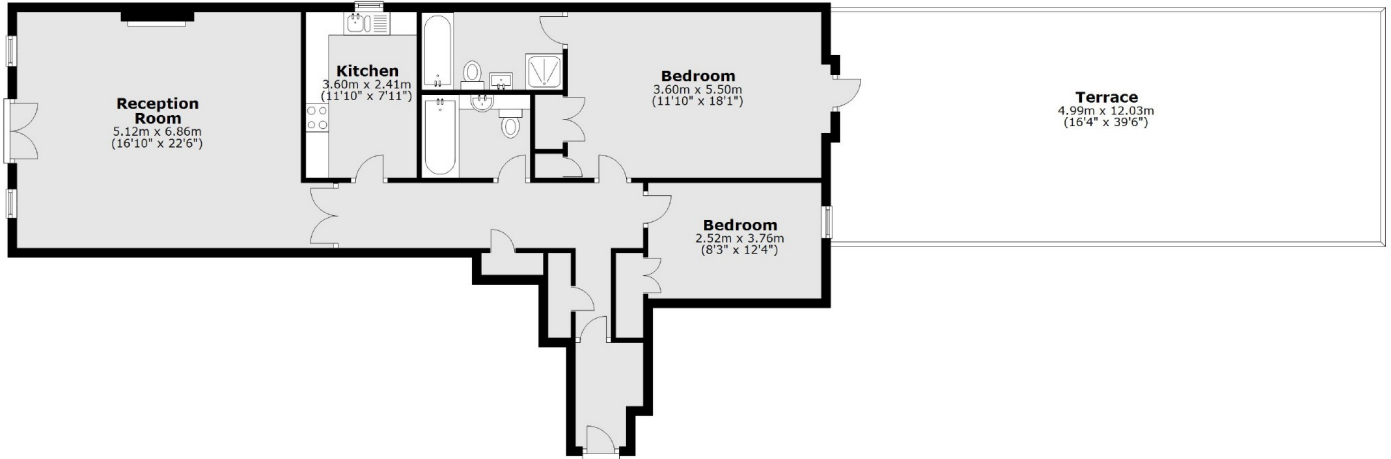
Located at the foot of Wimbledon Hill, just a short journey to both Wimbledon Village and on the edge of Wimbledon town centre with the district and over ground train line, with a choice of incredible pubs and restaurants.

Features

- Two Double Bedrooms
- Two Bathrooms
- Huge Private Terrace
- Underground Gated Parking
- Share Of Freehold
- No Onward Chain



Wimbledon Hill Road, London, SW19



Main area: Approx. 101.9 sq. metres (1096.4 sq. feet)
Plus roof terrace, approx. 59.6 sq. metres (642.0 sq. feet)