



Leeward Gardens, SW19

£1,899,950

**Dexters**





## Leeward Gardens, SW19

An end of terrace, four double bedroom house, organised over two floors. The house has the largest south facing garden on the terrace by almost twenty feet and there is further extension potential.

This is a unique house, being both end of terrace and having a south facing garden which is one of the largest in the cul de sac. The extension potential to the rear is still vast, without compromising the desirability of the garden.

The ground floor has a large reception room to the rear, with the kitchen separate and located to the front and a cloakroom. The garage has an electric door and can be converted to give further internal living space, or utilised as a workshop and storage.

The first floor has four bedrooms, with an additional room as a study. There is a family bathroom, with the master bedroom benefiting from an ensuite bathroom. There is still potential to extend the loft, with a clever architect and builder involved. There is off street parking for three cars.

Leeward Gardens is an exclusive cul de sac within Wimbledon Village and close to the wilds of Wimbledon Common. There's a plethora of exceptional public schools and independent boutique shops on your doorstep.

### Features

- Three Car Off Street Parking
- Large South Facing Garden
- Four/Five Bedrooms
- Lateral Living
- Further Extension Potential
- End Of Terrace







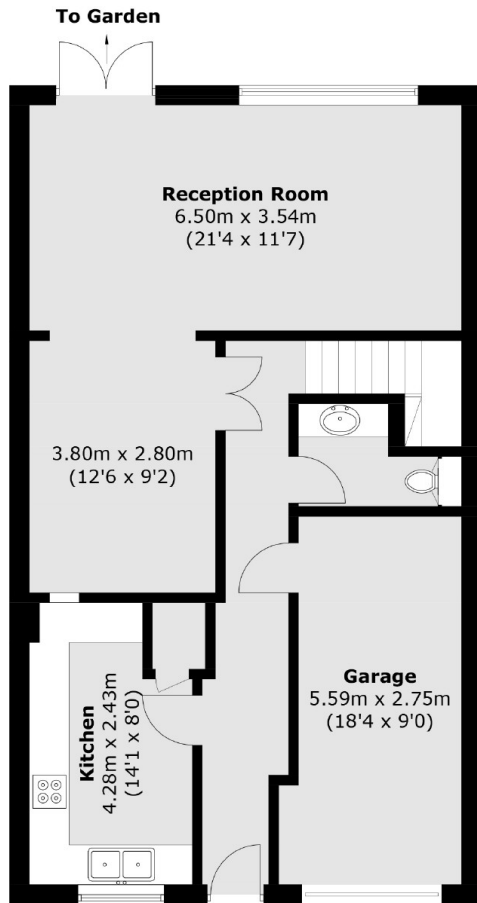




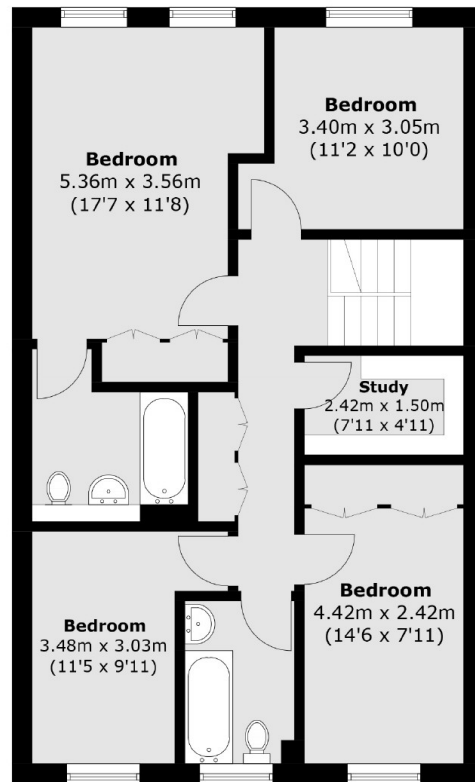




# Leeward Gardens, London, SW19



**Ground Floor**



**First Floor**

Total area (approx.): 148.8 sq. m (1,601.7 sq. ft)  
(Including Garage)